



Sony Ericsson

Working Instructions

- mechanical -



Xperia Mini Pro
SK17i, SK17a



CONTENTS

1	Exterior Views.....	4
1.1	SK17i, SK17a	4
1.2	SK17i, SK17a	5
2	Tools	6
3	Disassembly.....	7
3.1	Battery Cover & Battery	7
3.2	Core Unit Label.....	8
3.3	Lower Rear Cover Assy	9
3.4	Main Camera.....	10
3.5	Main PBA	11
3.6	Lower Front Cover Assy	13
3.7	Hinge Assy & Touch/Display Front Cover Assy	13
4	Replacement	17
4.1	Battery Cover.....	17
4.2	Battery Cover Assy Cobrand.....	17
4.3	Core Unit Label.....	17
4.4	Main Camera.....	17
4.5	Hinge Assy	18
4.6	Lower Front Cover Assy	18
4.7	Lower Rear Cover Assy	18
4.8	Screw Cap.....	18
4.9	Touch/Display Front Cover Assy	19
4.10	Audio Jack Connector & Audio Jack Adhesive Foil	20
4.11	Camera Key	23
4.12	Camera Key FPC	24
4.13	Camera Ring.....	27
4.14	Camera Window	28
4.15	Co-Brand Label	30
4.16	Conductive Copper Foil.....	32
4.17	Conductive Cushion	33
4.18	Receiver & Receiver Mesh.....	34
4.19	ET922 Screen Protector	36
4.20	First Mic Mesh	38
4.21	Flash LED FPC & Flash LED FPC Adhesive Foil.....	39
4.22	GPS Shielding Conductive Gasket	43
4.23	Hinge FPC & Hinge Assy Adhesive Foil	44
4.24	Hinge FPC Clip	52
4.25	Loud Speaker Mesh	54



4.26 Loudspeaker & Loud Speaker Gasket	55
4.27 Main Antenna Switch Protective Film	57
4.28 Main Keypad	58
4.29 Main Keypad Domesheet	60
4.30 Micro USB Cover	61
4.31 Power Key	62
4.32 Receiver Deco	63
4.33 Second Mic Mesh	64
4.34 Shielding Can Lid ABB	66
4.35 Shielding Can Lid DBB	67
4.36 Shielding Can Lid RF	68
4.37 VGA Camera Rubber Carrier	69
4.38 Volume Key	70
4.39 Water Indicator	72
4.40 WLAN Shielding Adhesive Foil	73
4.41 Board Swap	74
4.41.1 Board Swap- Replacement	74
4.41.2 Board Swap – Change Label	74
4.41.3 Board Swap – Customize of Software	74
5 Reassembly.....	75
5.1 Touch/Display Front Cover Assy & Hinge Assy	75
5.2 Lower Front Cover Assy	77
5.3 Main PBA	78
5.4 Main Camera.....	80
5.5 Lower Rear Cover Assy	80
5.6 Core Unit Label.....	81
5.7 Battery & Battery Cover	82
6 Country of Origin Barcodes for Brazil/VIVO Labels.....	84
Revision History	85

**For general information about mechanical repair related issues, refer to
1220-1333: Generic Repair Manual - mechanical**



1 Exterior Views

1.1 SK17i, SK17a





Exterior Views

1.2 SK17i, SK17a



2 Tools

SPECIAL TOOLS

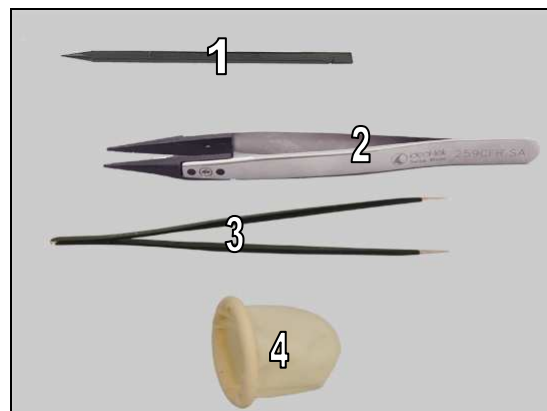
1. Torque Screwdriver
2. Bits (JCIS No 0).
3. Front Opening Tool
4. Flex Film Assembly Tool
5. Guitar Pick



For part no's on the tools above, refer to the 'Tools Catalogue/Matrix'.

STANDARD TOOLS

1. Nylon Pointer
2. ESD Tweezers
3. Tweezers
4. Finger Cots

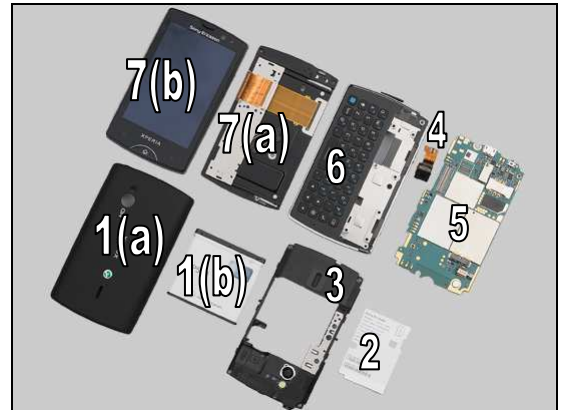




3 Disassembly

The disassembly is done in the following order:

1. Battery Cover (a) and Battery (b)
2. Core Unit Label
3. Lower Rear Cover Assy
4. Main Camera
5. Main PBA
6. Lower Front Cover Assy
7. Hinge Assy (a) and Touch/Display Front Cover Assy (b).



3.1 Battery Cover & Battery

Insert a Guitar Pick into the cavity and slide it along the gap.



Slide it along the bottom side.



Slide it along this side.





Disassembly

Remove the Battery Cover.



Lift up and remove the Battery from its cavity using fingers.



3.2 Core Unit Label

Read the old Mobile Phone Label and write the information into the 'LabelMake' program before removal.
Carefully peel off the Label using a Flex Film Assembly Tool.



Gently remove it using fingers.

Scrap! Not to be reused!

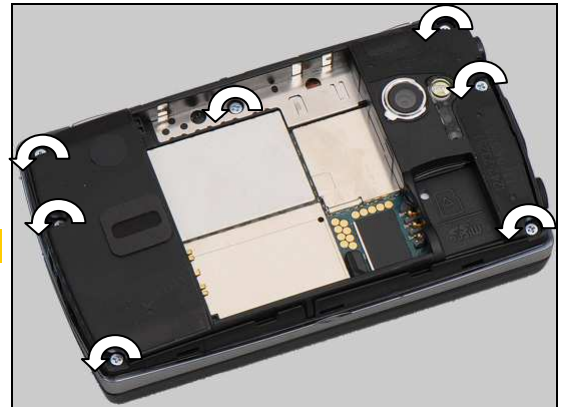




Disassembly

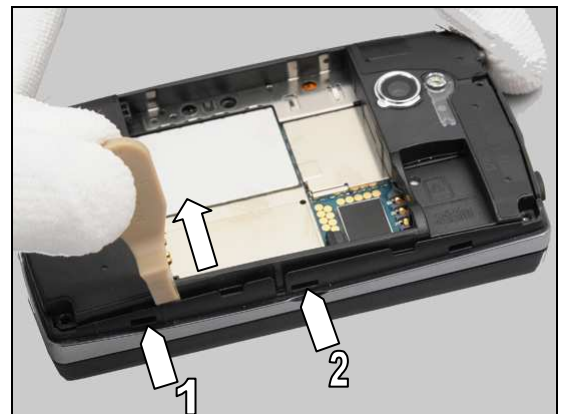
Remove the seven Screws Torx Len:3.1 Diam:1.4 using a screwdriver with Bits (JCIS No 0).

Scrap! Not to be reused!

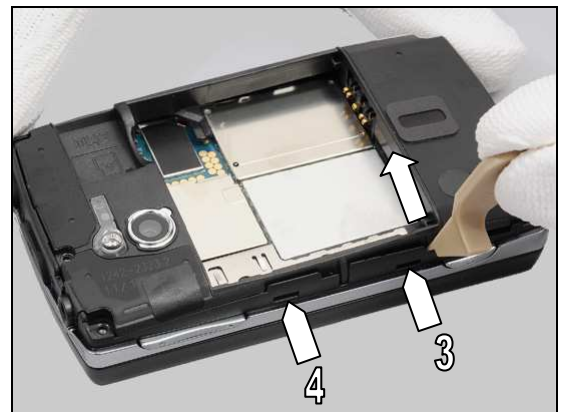


3.3 Lower Rear Cover Assy

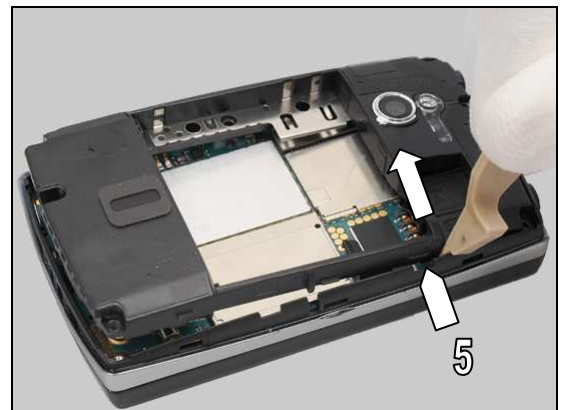
Insert a Front Opening Tool to release the two hooks as shown.



Do the same on the other side to release the two hooks as shown.



Release the last hook as shown.

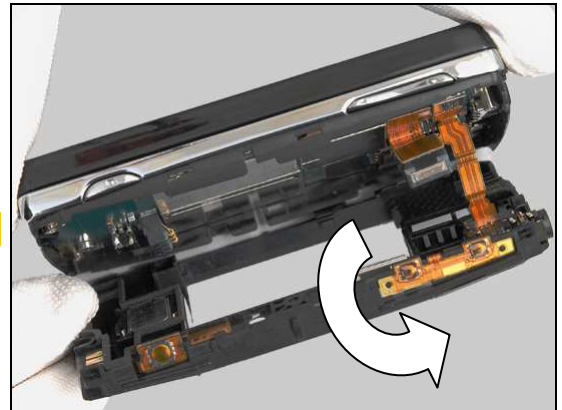




Disassembly

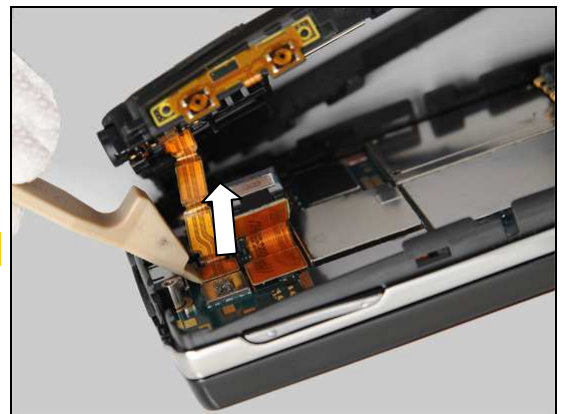
Gently lift up the Lower Rear Cover Assy.

Do not stretch the FPC!

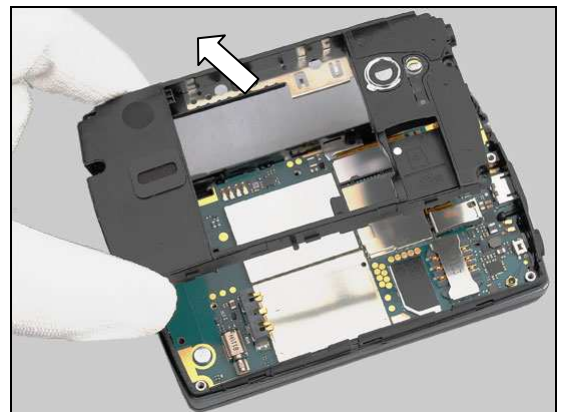


Unsnap the BtB connector from the top using a Front Opening Tool.

Do not touch the components on the Main PBA!



Remove the Lower Rear Cover Assy.

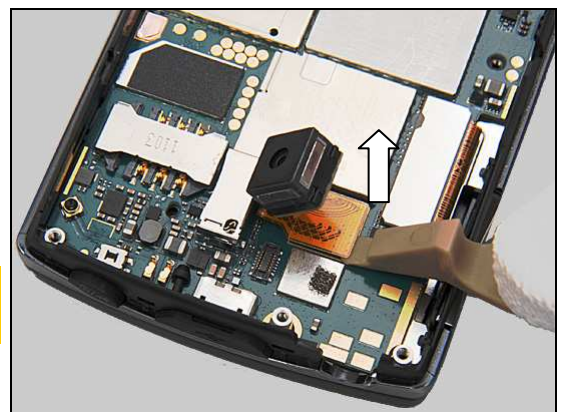


3.4 Main Camera

Unsnap the BtB connector to release the Main Camera using a Front Opening Tool.

Do not hold the FPC of the Main Camera!

Do not touch the components on the Main PBA!

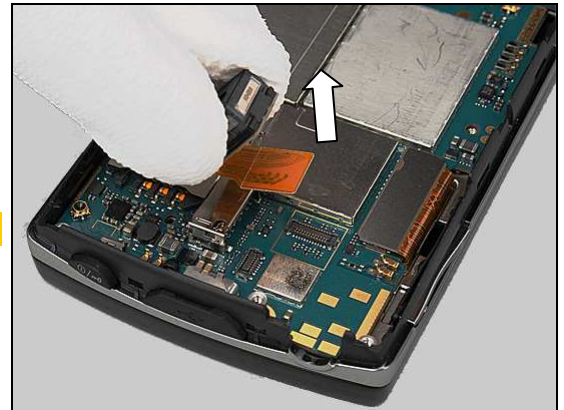




Disassembly

Gently remove the Main Camera.

Do not touch the surface of camera lens!

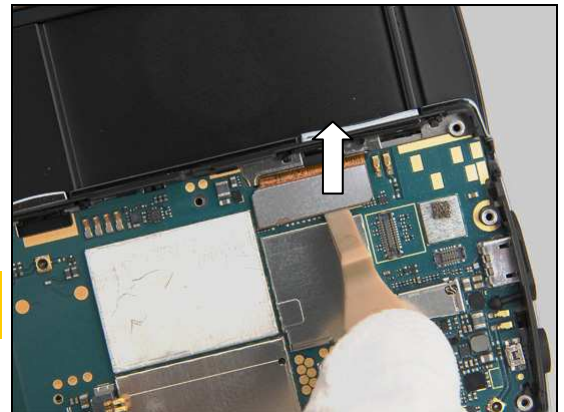


3.5 Main PBA

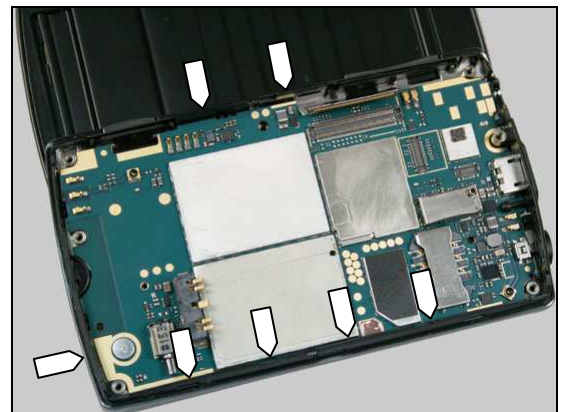
Open the slider.

Unsnap the BtB connector using a Front Opening Tool.

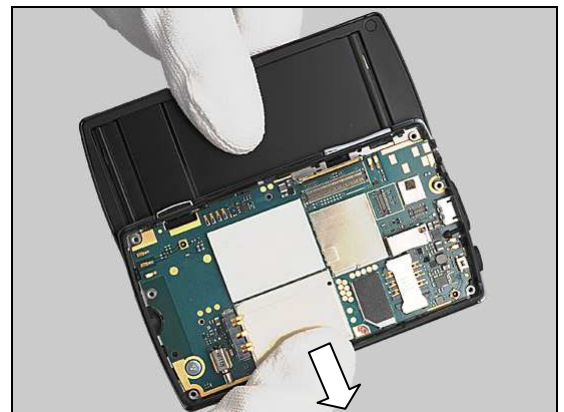
Insert the tool at the position where the guiding line is shown. Do not touch the components on the Main PBA!



Identify the total seven hooks.

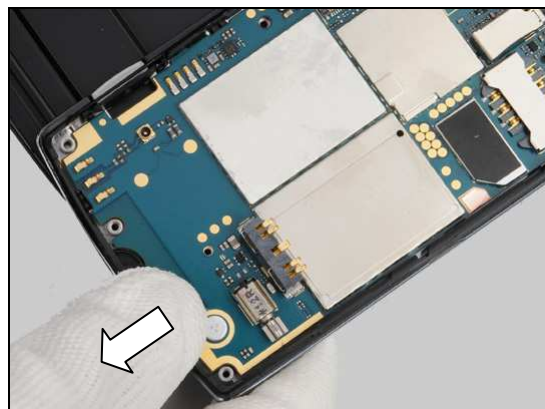


Push the edge of Lower Front Cover Assy outwards to release the four hooks.

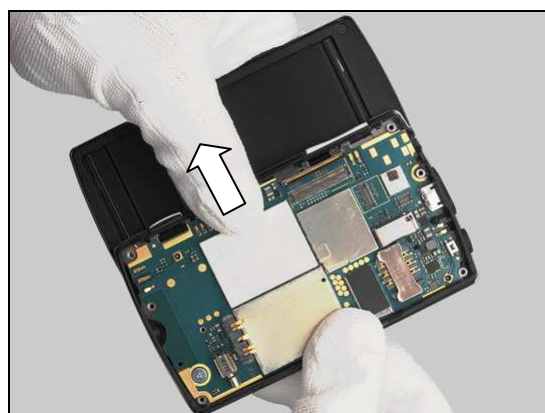


Disassembly

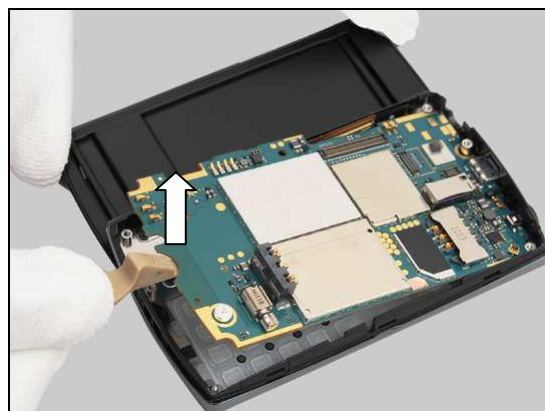
Push the bottom side edge outwards to release the bottom-right hook.



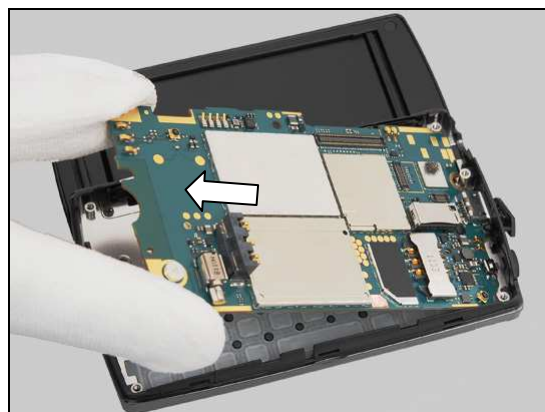
Push the other side edge outwards to release the two hooks.



Insert a Front Opening Tool to lift up the Main PBA.



Gently remove the Main PBA.





Disassembly

3.6 Lower Front Cover Assy

Close the slider.

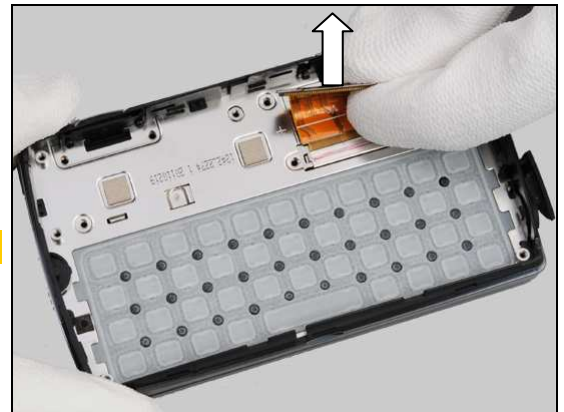
Remove the seven Screws Other Len:1.6 Diam:1.4 using a screwdriver with Bits (JCIS No 0).

Scrap! Not to be reused!

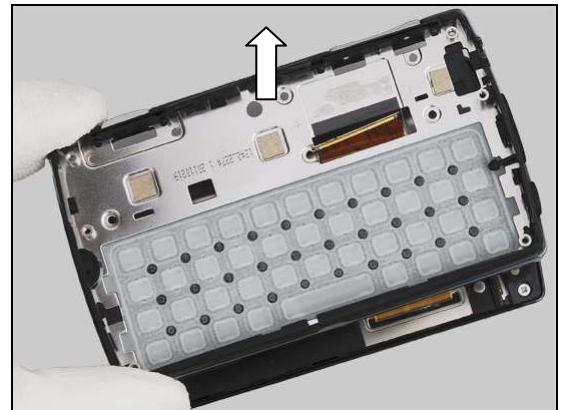


Gently separate the adhesive area using fingers between the Hinge FPC and Lower Front Cover Assy.

Do not stretch the Hinge FPC!

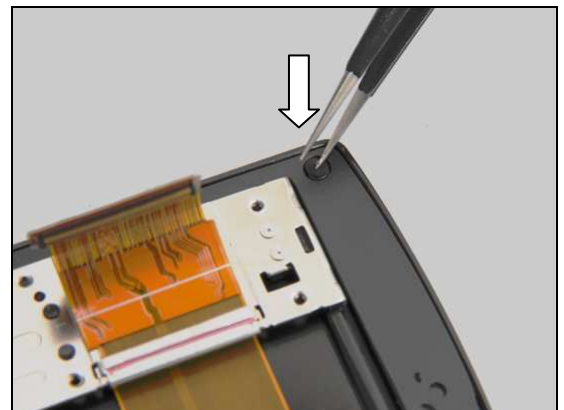


Remove the Lower Front Cover Assy by threading the Hinge FPC through the hole.



3.7 Hinge Assy & Touch/Display Front Cover Assy

Pierce the center of the Screw Cap by using a pair of tweezers, and then remove it.

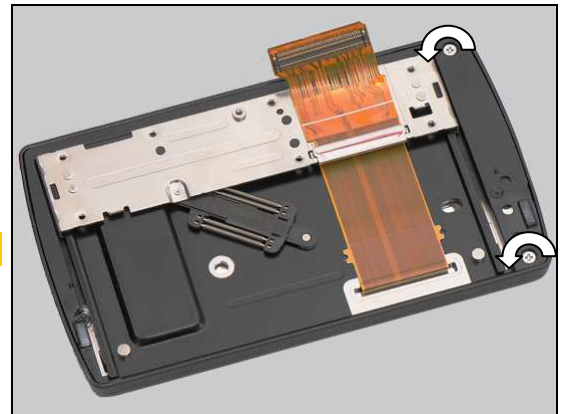




Disassembly

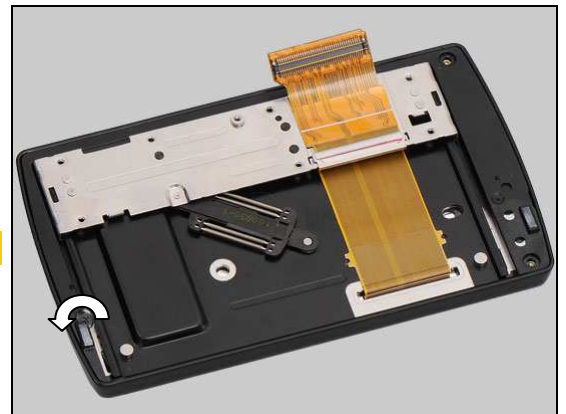
Remove the two Screws M1.4X2.0 by a screwdriver with Bits (JCIS No 0).

Scrap! Not to be reused!

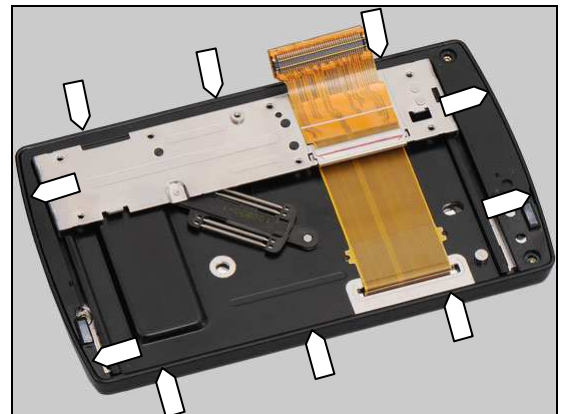


Remove the Screw Other Len:1.6 Diam:1.4 by a screwdriver with Bits (JCIS No 0).

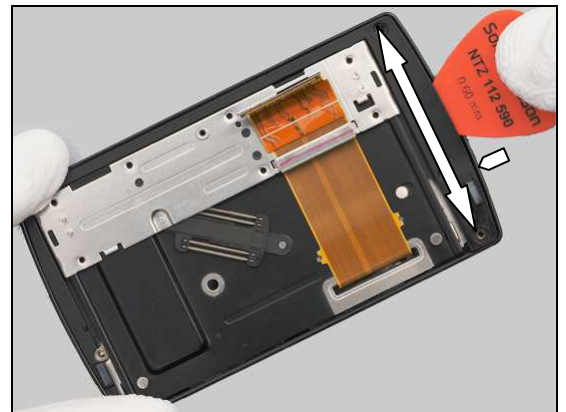
Scrap! Not to be reused!



Identify the total ten hooks.



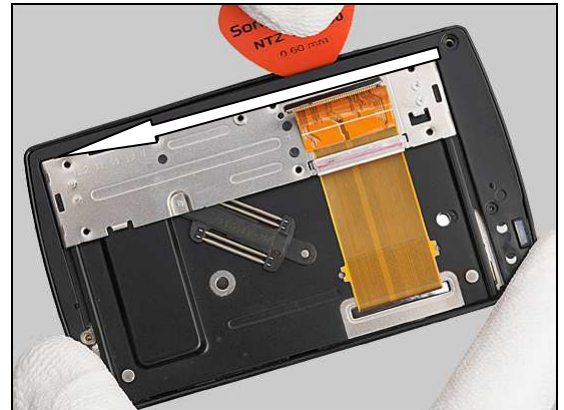
Insert a Guitar Pick into the cavity on the top right as shown and slide to unsnap the two hooks.



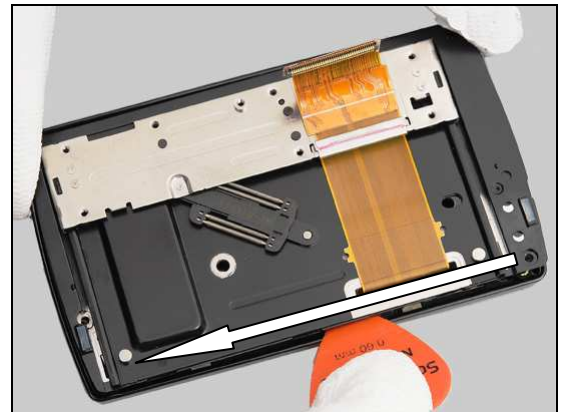


Disassembly

Slide a Guitar Pick on this side to unsnap the three hooks.



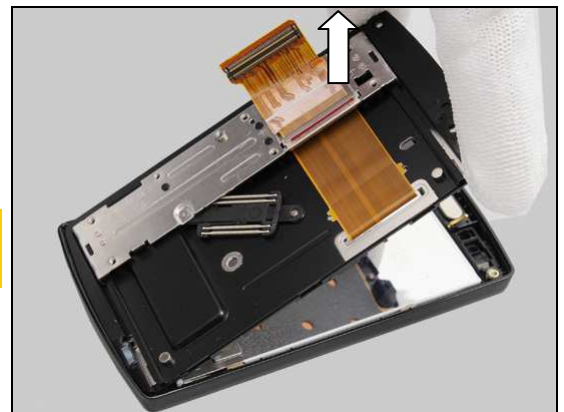
Do the same on the opposite side to unsnap the other three hooks.



Gently lift up the top of the Hinge Assy to release the two hooks at the bottom.

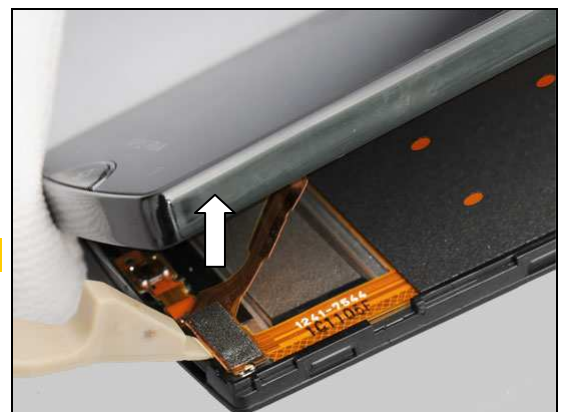
Do not slide the bottom side using a Guitar Pick!

Do not stretch the Touch/Display FPC beneath!



Turn over the two assemblies together.
Unsnap the BtB connector with a Front Opening Tool.

Do not stretch the Touch/Display FPC!



Disassembly

Separate the Hinge Assy and Touch/Display Front Cover Assy.





4 Replacement

4.1 Battery Cover

Follow the 3.1 Disassembly instructions.

Prepare the new Battery Cover.

Follow the 5.7 Reassembly instructions.



4.2 Battery Cover Assy Cobrand

Follow the 3.1 Disassembly instructions.

Prepare the new Battery Cover Assy Cobrand.

Follow the 4.15 Installation instructions.

Follow the 5.7 Reassembly instructions.

Install a new Co-Brand Label!



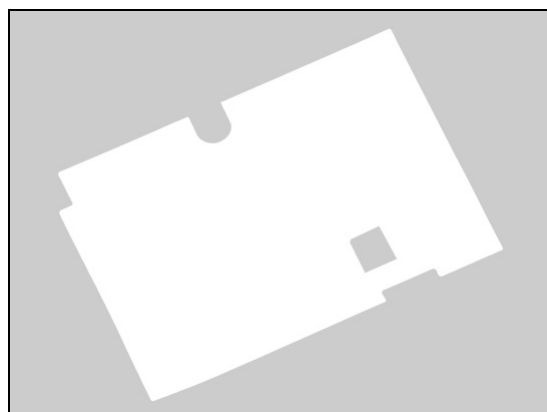
4.3 Core Unit Label

Follow the 3.1 – 3.2 Disassembly instructions.

Prepare the new Core Unit Label.

Follow the 5.6 – 5.7 Reassembly instructions.

Scrap the Core Unit Label! It cannot be reused!



4.4 Main Camera

Follow the 3.1 – 3.4 Disassembly instructions.

Prepare the new Main Camera.

Follow the 5.4 – 5.7 Reassembly instructions.





Replacement

4.5 Hinge Assy

Follow the 3.1 – 3.7 Disassembly instructions.

Follow the 4.37 Removal instructions.

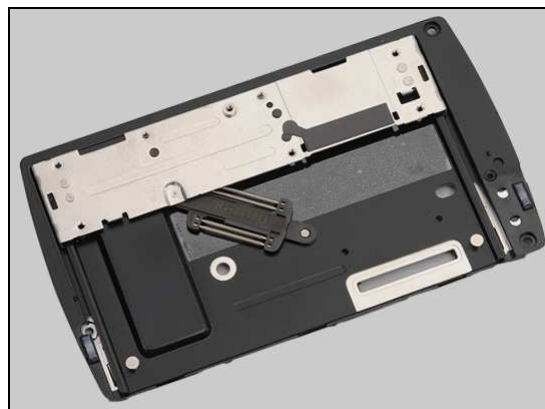
Prepare the new Hinge Assy.

Follow the 4.23, 4.24 and 4.37 Installation instructions.

Follow the 5.1 – 5.7 Reassembly instructions.

Install a new Hinge FPC and Hinge FPC Clip!

Do not need to install a new Hinge Assy Adhesive Foil!



4.6 Lower Front Cover Assy

Carry out the 4.28 Removal as described below.

Follow the 3.1 – 3.6 Disassembly instructions.

Follow the 4.11, 4.30 and 4.31 Removal instructions.

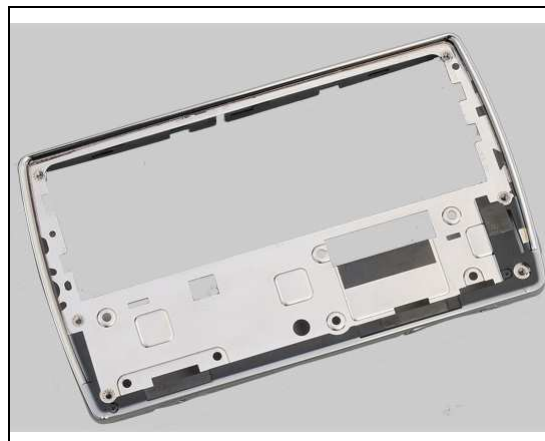
Prepare the new Lower Front Cover Assy.

Follow the 4.11, 4.30, 4.31 and 4.38 Installation instructions.

Follow the 5.2 – 5.7 Reassembly instructions.

Carry out the 4.28 Installation as described below.

Install a new Main Keypad and install a new Volume Key in case of adhesive missing!



4.7 Lower Rear Cover Assy

Follow the 3.1 – 3.3 Disassembly instructions.

Follow the 4.10 Removal instructions.

Prepare the new Lower Rear Cover Assy.

Follow the 4.12, 4.21, 4.10 and 4.27 Installation instructions.

Follow the 5.5 – 5.7 Reassembly instructions.

Install a new Camera Key FPC, Flash LED FPC and Main Antenna Switch Protective Film!

Do not need to install a new Audio Jack Adhesive Foil and Flash LED FPC Adhesive Foil!



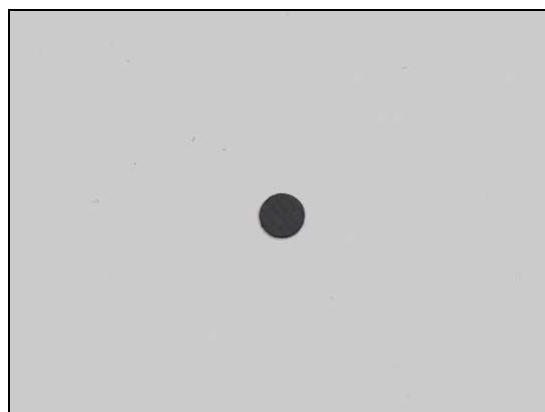
4.8 Screw Cap

Follow the 3.1 – 3.7 Disassembly instructions.

Prepare the new Screw Cap.

Follow the 5.1 – 5.7 Reassembly instructions.

Scrap the Screw Cap! It cannot be reused!



Replacement

4.9 Touch/Display Front Cover Assy

Follow the 3.1 – 3.7 Disassembly instructions.

Follow the 4.18 Removal instructions.

Prepare the new Touch/Display Front Cover Assy.

Follow the 4.18 Installation instructions.

Follow the 5.1 – 5.7 Reassembly instructions.

Do not need to install a new Receiver Mesh!



Replacement

4.10 Audio Jack Connector & Audio Jack Adhesive Foil

Follow the 3.1 – 3.3 Disassembly instructions.

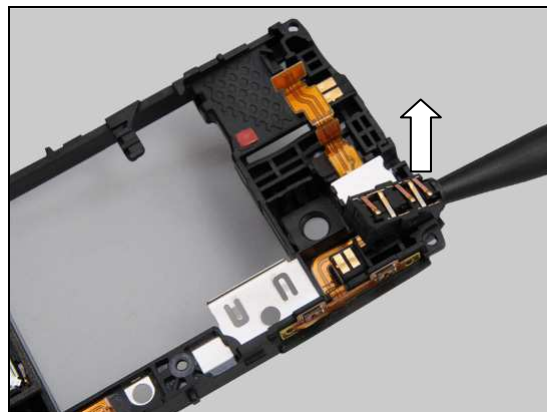
Prepare the new Audio Jack Connector & Audio Jack Adhesive Foil.

Follow the 5.5 – 5.7 Reassembly instructions.



REMOVAL

Insert a Nylon Pointer into the hole of the Audio Jack Connector to release it.



Peel off the Audio Jack Adhesive Foil.

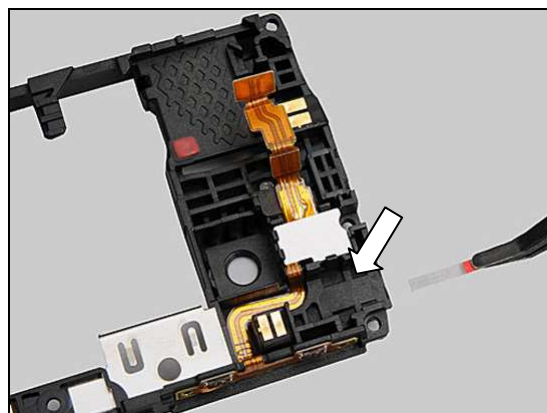
Scrap the Audio Jack Adhesive Foil only if it is folded or the stickiness of adhesive is lost!



Replacement: Audio Jack Connector & Audio Jack Adhesive Foil

INSTALLATION

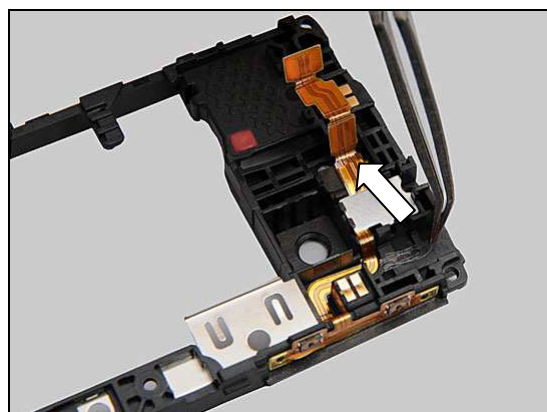
Attach a new Audio Jack Adhesive Foil in the proper place as shown.



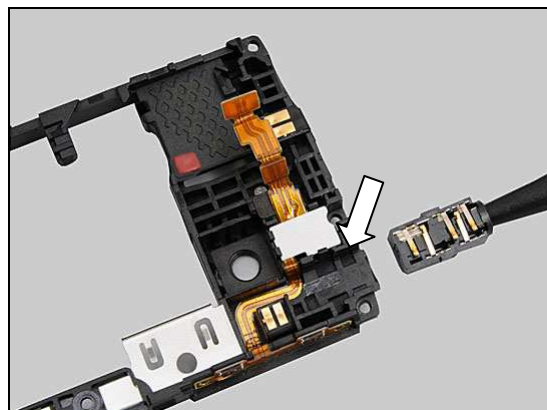
Press back and forth to secure the attachment.



Remove the protective film.



Attach the new Audio Jack Connector into its socket.



Replacement: Audio Jack Connector & Audio Jack Adhesive Foil

Press to secure the attachment using a finger.



Replacement

4.11 Camera Key

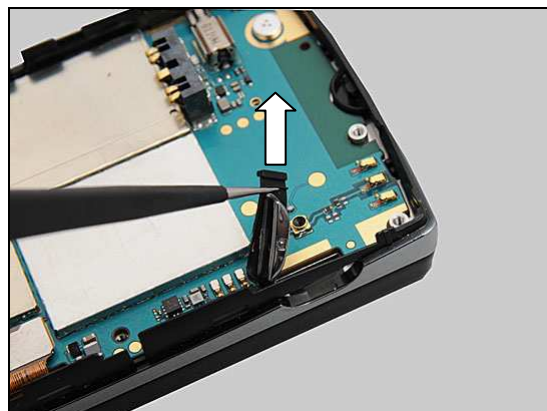
Follow the 3.1 – 3.3 Disassembly instructions.

Prepare the new Camera Key.

Follow the 5.5 – 5.7 Reassembly instructions.

REMOVAL

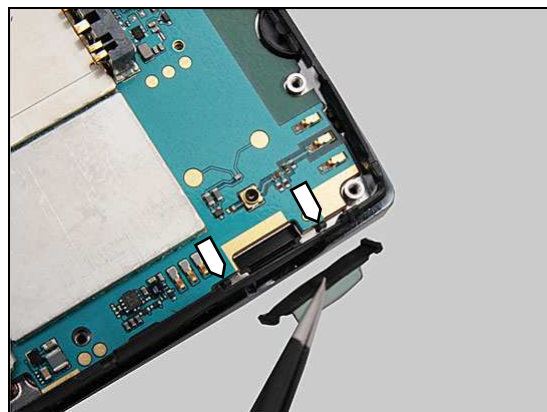
Remove the Camera Key by releasing the guiding pins from its cavity using a pair of tweezers.



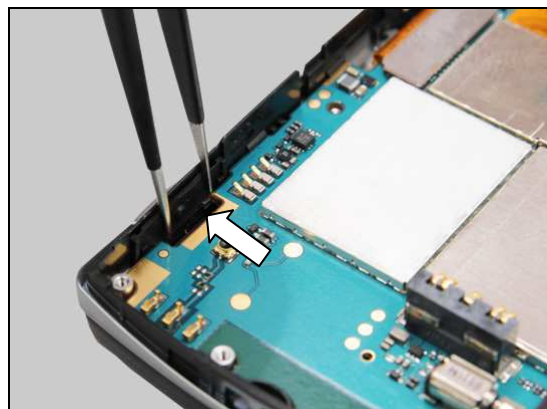
INSTALLATION

Mount a new Camera Key in place.

Insert one of the guiding pins into its cavity, then mount the Camera Key into its hole, and finally insert another pin.



Press to secure its right position.





Replacement

4.12 Camera Key FPC

Follow the 3.1 – 3.3 Disassembly instructions.

Prepare the new Camera Key FPC.

Follow the 5.5 – 5.7 Reassembly instructions.

REMOVAL

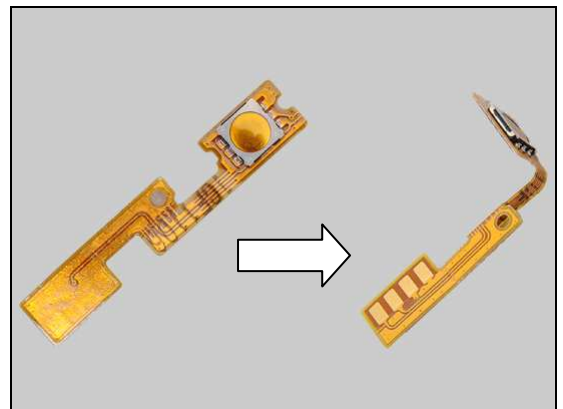
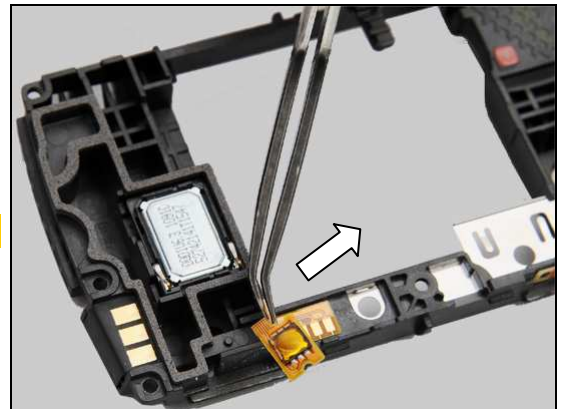
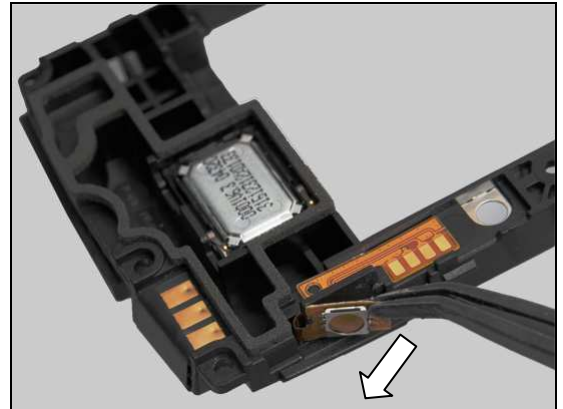
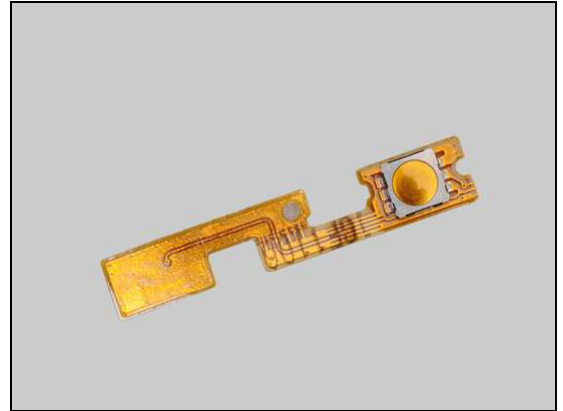
Detach the key dome part with a Flex Film Assy Tool.

Gently remove the FPC.

Scrap the Camera Key FPC! It cannot be reused!

INSTALLATION

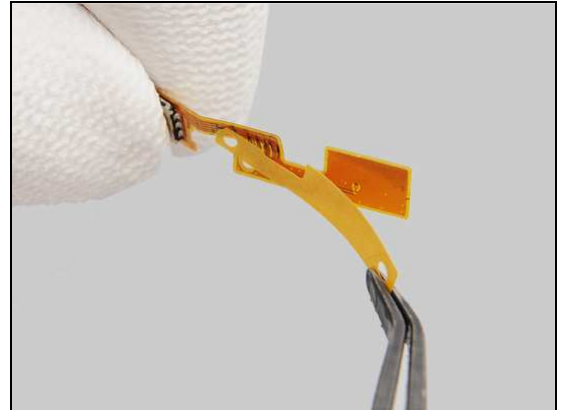
Pre-bend the new Camera Key FPC as shown.



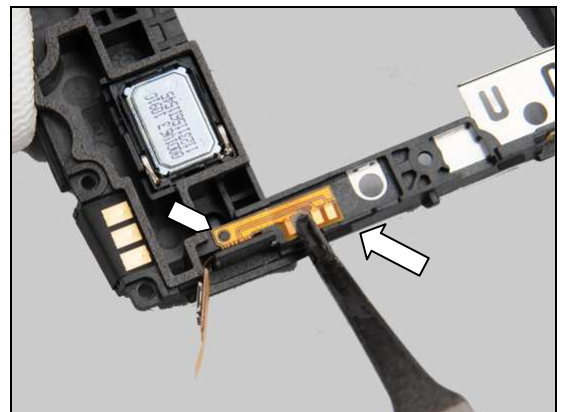


Replacement: Camera Key FPC

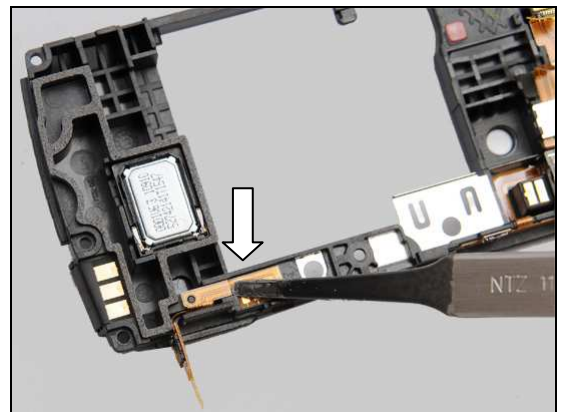
Peel off the protective film.



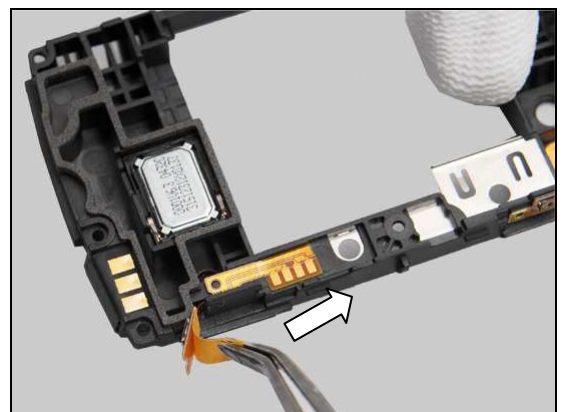
Place the Camera Key FPC in alignment with the pin and its cavity as shown.



Press to secure its attachment.

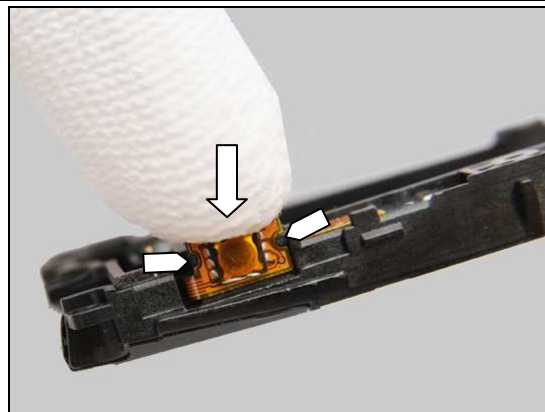


Peel off the protective film.



Replacement: Camera Key FPC

Attach the key dome part in alignment with the two guiding pins and press to secure its attachment using fingers.





Replacement:

4.13 Camera Ring

Follow the 3.1 Disassembly instructions.

Prepare the new Camera Ring.

Follow the 5.7 Reassembly instructions.

REMOVAL

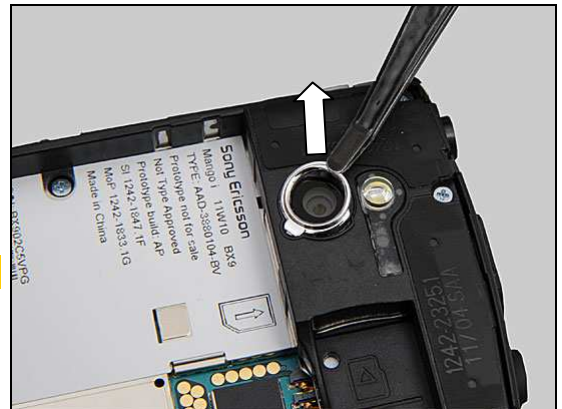
Detach the Camera Ring using a Flex Film Assy Tool.

Scrap the Camera Ring! It cannot be reused!

INSTALLATION

Mount a new Camera Ring in the proper place aligning with the guiding pin as shown.

Press to secure the attachment using a finger.



Replacement

4.14 Camera Window

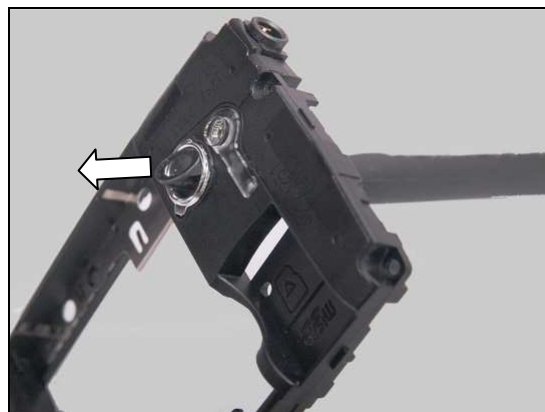
Follow the 3.1 – 3.3 Disassembly instructions.

Prepare the new Camera Window.

Follow the 5.5 – 5.7 Reassembly instructions.

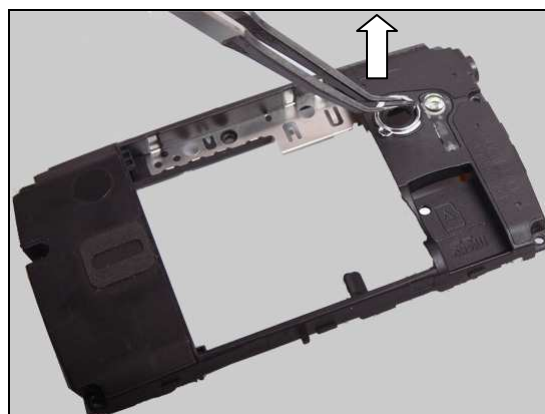
REMOVAL

Push against the back side of the Camera Window with a Nylon Pointer.



Detach and remove it with a Flex Film Assembly Tool.

Scrap the Camera Window! It cannot be reused!



INSTALLATION

Mount a new Camera Window in place as shown.

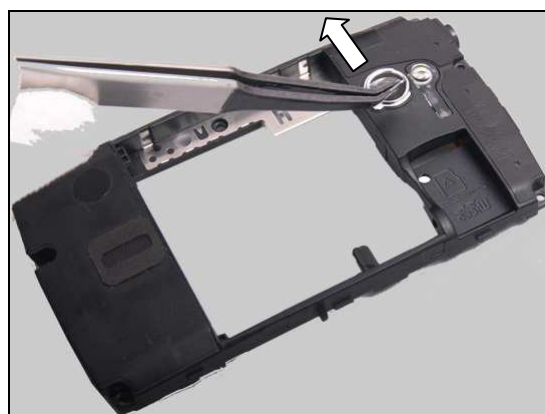


Replacement: Camera Window

Press to secure its attachment using a finger.



Remove the protective film.





Replacement

4.15 Co-Brand Label

Follow the 3.1 Disassembly instructions.

Prepare the new Co-Brand Label.

Follow the 5.7 Reassembly instructions.

REMOVAL

Pierce the Co-Brand Label through the two holes with a pair of tweezers as shown.

Detach it.

Scrap the Co-Brand Label! It cannot be reused.

INSTALLATION

Mount a new Co-brand Label in place.



Replacement: Co-brand Label

Press to secure its attachment using a finger.



Replacement

4.16 Conductive Copper Foil

Follow the 3.1 – 3.3 Disassembly instructions.
 Prepare the new Conductive Copper Foil.
Follow the 5.5 – 5.7 Reassembly instructions.

REMOVAL

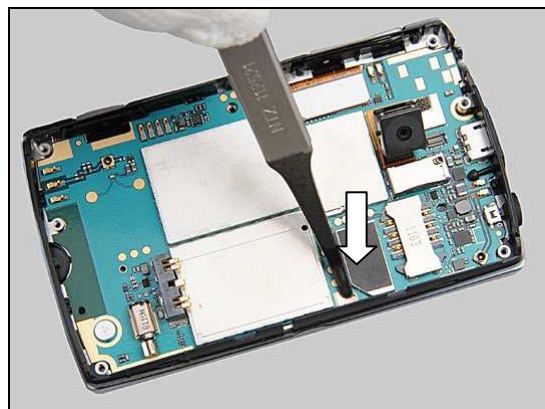
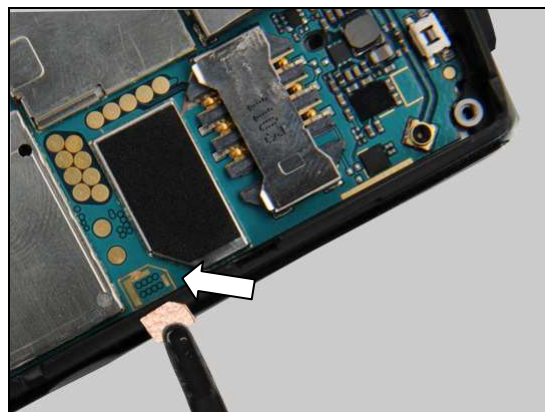
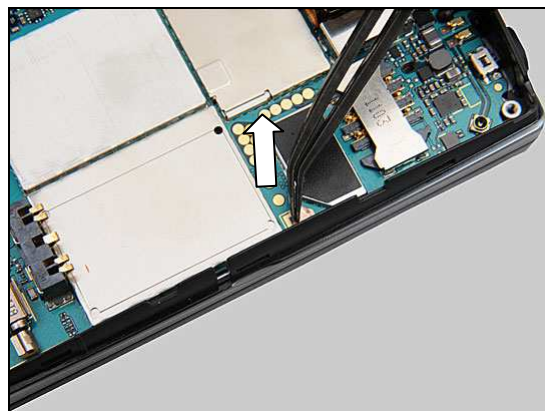
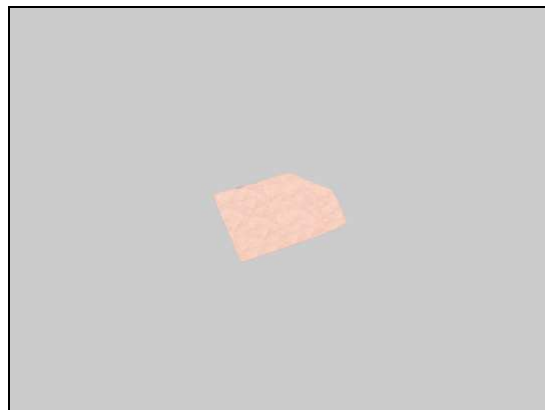
Detach it using a Flex Film Assy Tool.

Scrap the Conductive Copper Foil only if the stickiness is lost!

INSTALLATION

Attach a new Conductive Copper Foil in its proper place as shown.

Press to secure its attachment.





Replacement

4.17 Conductive Cushion

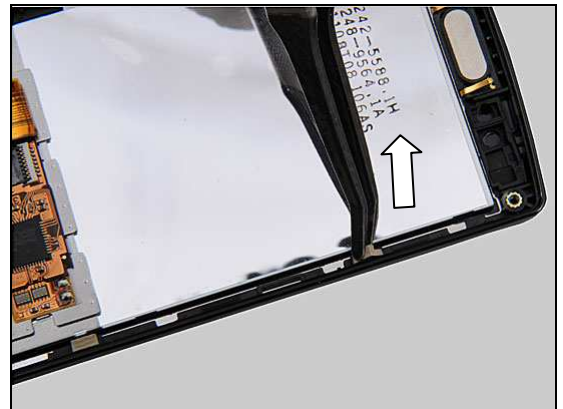
Follow the 3.1 – 3.7 Disassembly instructions.

Prepare the new Conductive Cushion.

Follow the 5.1 – 5.7 Reassembly instructions.

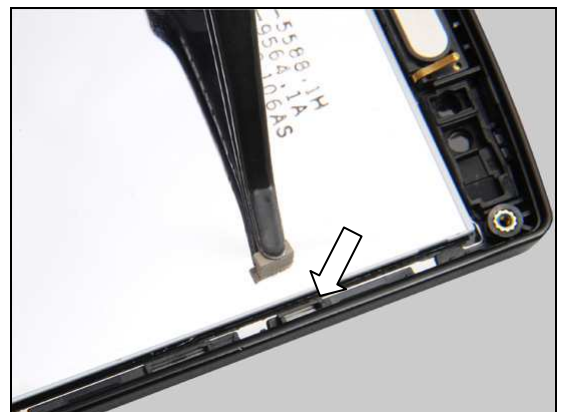
REMOVAL

Remove the Conductive Cushion using a Flex Film Assy Tool



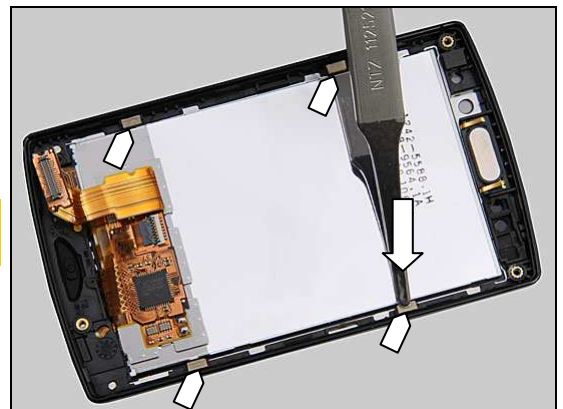
INSTALLATION

Mount a new Conductive Cushion into its cavity.



Gently press to secure its position.

The instructions are applicable to all four Conductive Cushions as shown.





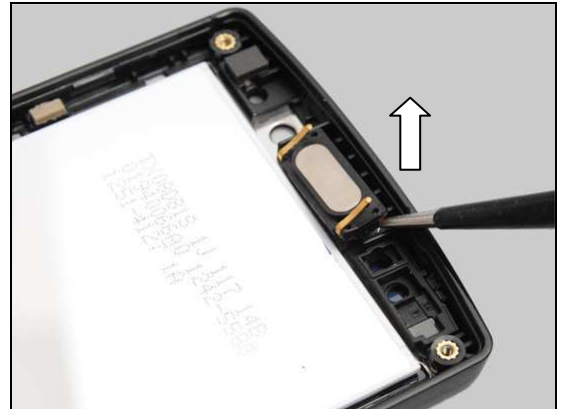
Replacement

4.18 Receiver & Receiver Mesh

*Follow the 3.1 – 3.7 Disassembly instructions.
Prepare the new Receiver & Receiver Mesh.
Follow the 5.1 – 5.7 Reassembly instructions.*

REMOVAL

Insert a pair of tweezers into this corner and gently lift up the Receiver.



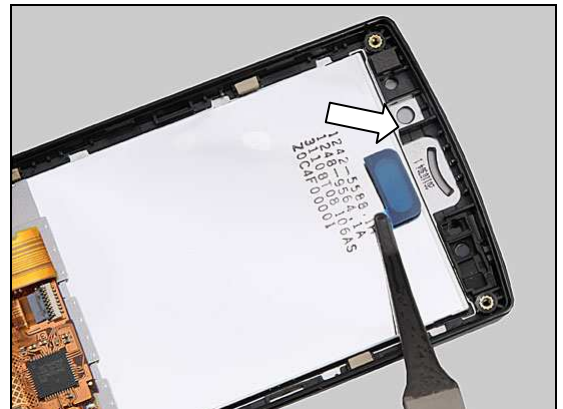
Detach and remove the Receiver Mesh using a Flex Film Assy Tool.

Scrap the Receiver Mesh! It cannot be reused!



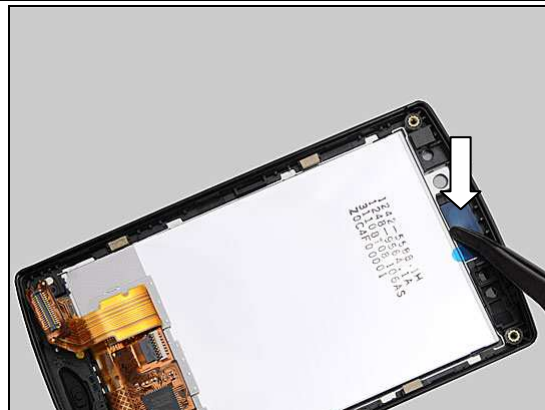
INSTALLATION

Attach a new Receiver Mesh in its proper place as shown.



Replacement: Receiver & Receiver Mesh

Press to secure its attachment.



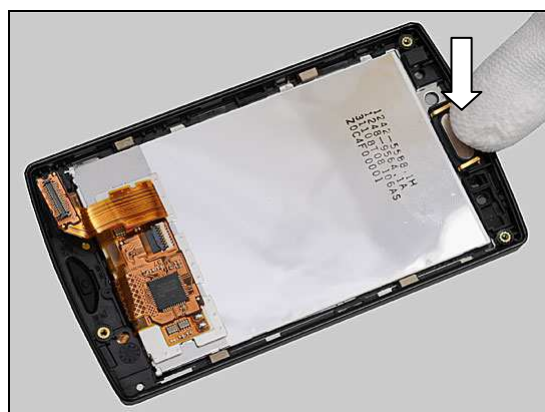
Gently remove the protective film.



Mount a new Receiver in its cavity with contact pins towards the top side.



Press to secure its attachment.



Replacement

4.19 ET922 Screen Protector

Prepare the new ET922 Screen Protector.

Power off the phone in the action!

REMOVAL

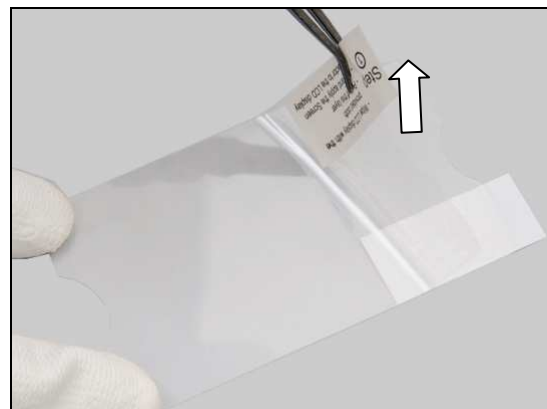
Insert a guitar pick from the corner to peel off the ET922 Screen Protector.

Scrap the ET922 Screen Protector! It cannot be reused!

INSTALLATION

Clean the touch/display window with a cloth.

Peel off the layer marked with step 1.



Replacement: ET922 Screen Protector

Align and apply the Screen Protector to the touch/display window.



Use a scraper to remove remaining air bubbles.



Peel off the layer marked with step 2.



Replacement

4.20 First Mic Mesh

Follow the 3.1 – 3.5 Disassembly instructions.

Prepare the new First Mic Mesh.

Follow the 5.3 – 5.7 Reassembly instructions.

REMOVAL

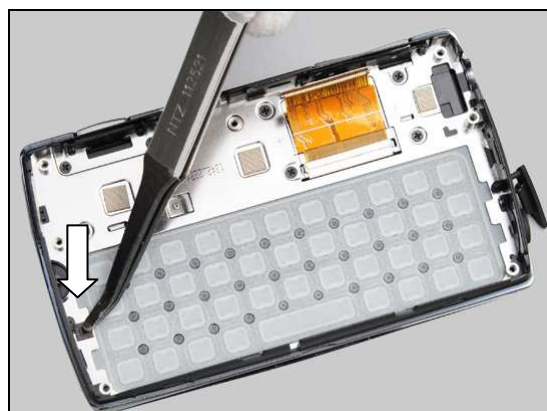
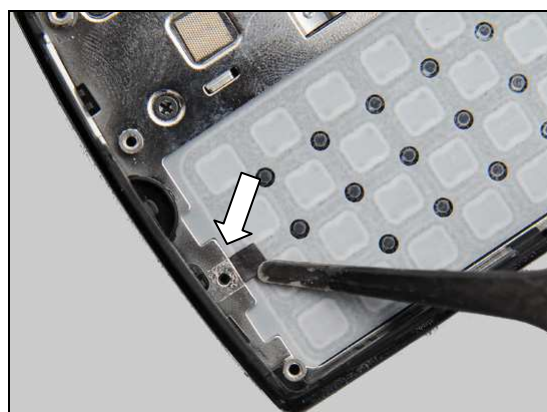
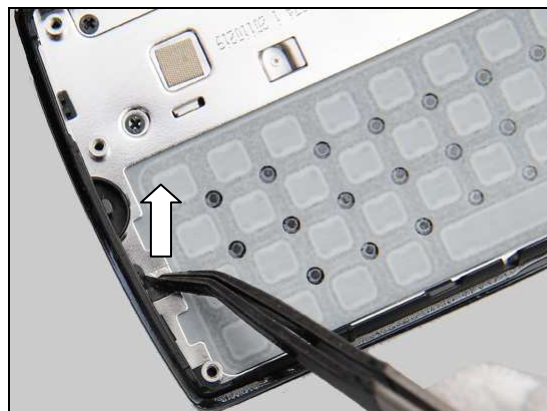
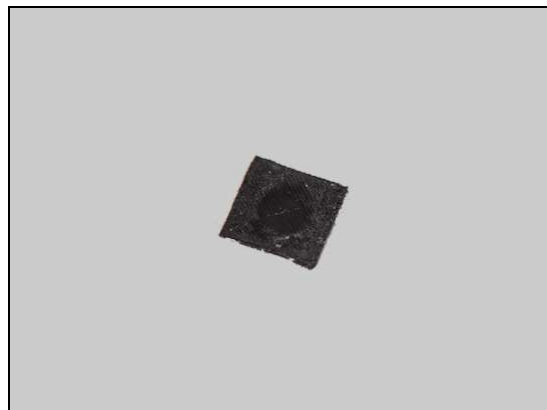
Peel off the First Mic Mesh using a Flex Film Assy Tool.

Scrap the First Mic Mesh! It cannot be reused!

INSTALLATION

Attach a new First Mic Mesh in its proper place as shown.

Press to secure its attachment.





Replacement

4.21 Flash LED FPC & Flash LED FPC Adhesive Foil

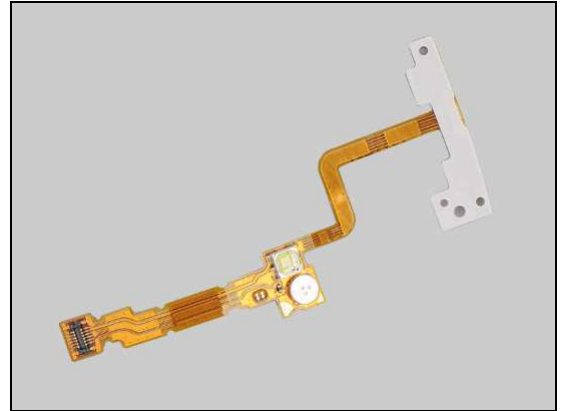
Follow the 3.1 – 3.3 Disassembly instructions.

Follow the 4.10 Removal instructions.

Prepare the new Flash LED FPC & Flash LED FPC Adhesive Foil.

Follow the 4.10 Installation instructions

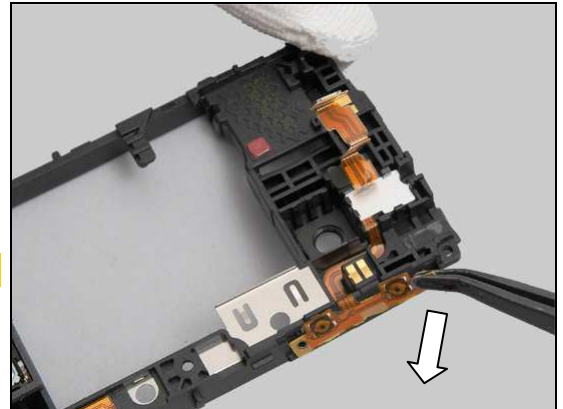
Follow the 5.5 – 5.7 Reassembly instructions.



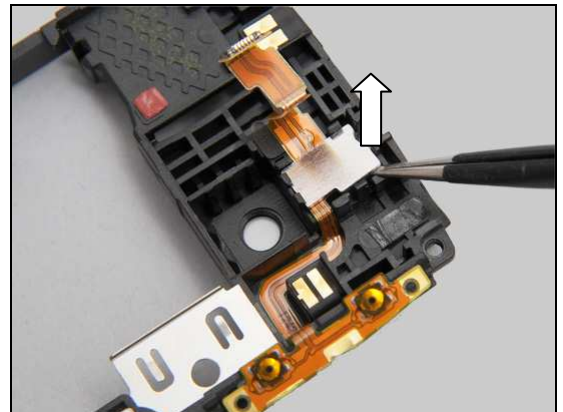
REMOVAL

Detach the side domes with a Flex Film Assy Tool.

The metal sheet beneath must be detached!

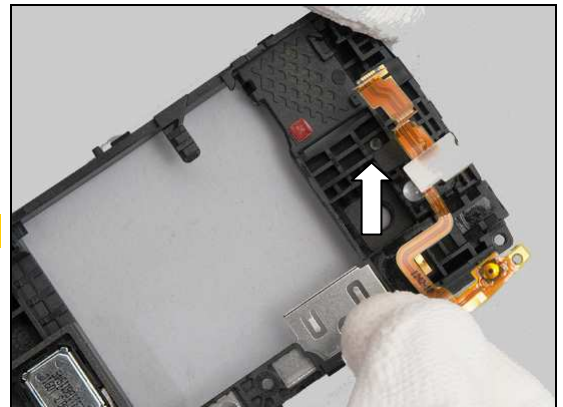


Insert a pair of tweezers in the corner as shown to gently release the metal sheet.



Remove it gently.

Scrap the Flash LED FPC! It cannot be reused!





Replacement: Flash LED FPC & Flash LED FPC Adhesive Foil

Gently peel off the Flash LED FPC Adhesive Foil.

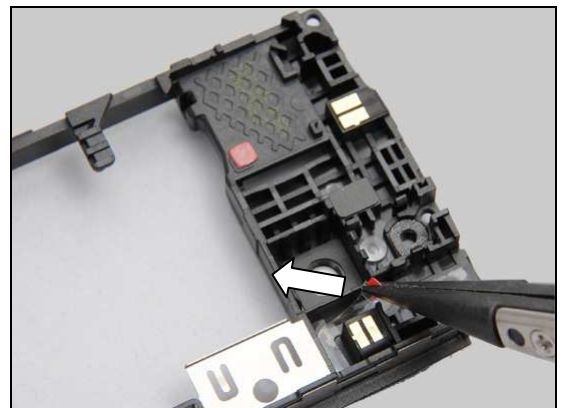
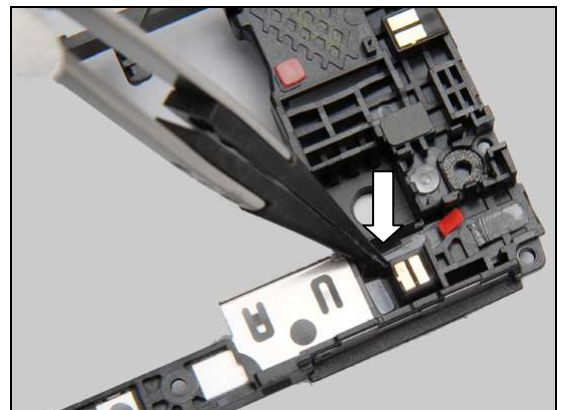
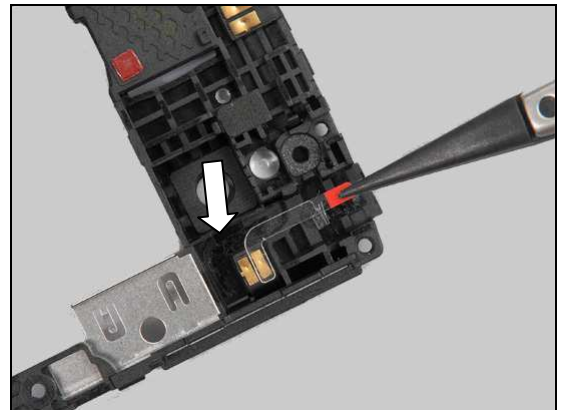
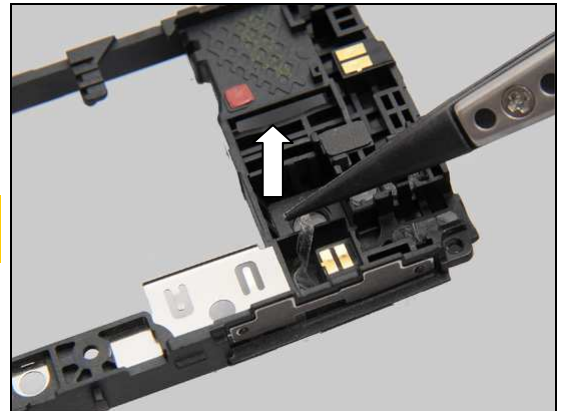
Scrap the Flash LED FPC Adhesive Foil only if it is folded or the stickiness of the adhesive is lost!

INSTALLATION

Attach a new Flash LED FPC Adhesive Foil in place as shown.

Press along it to assure its attachment.

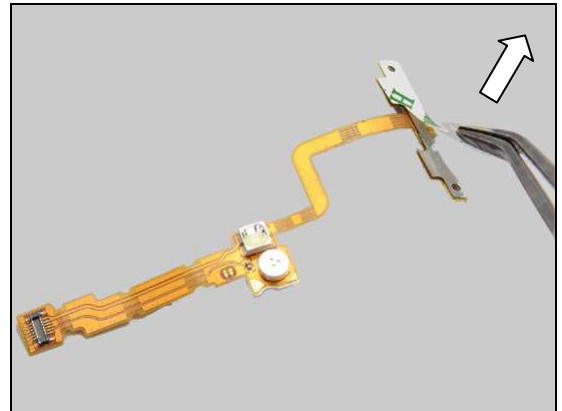
Gently peel off the protective film.



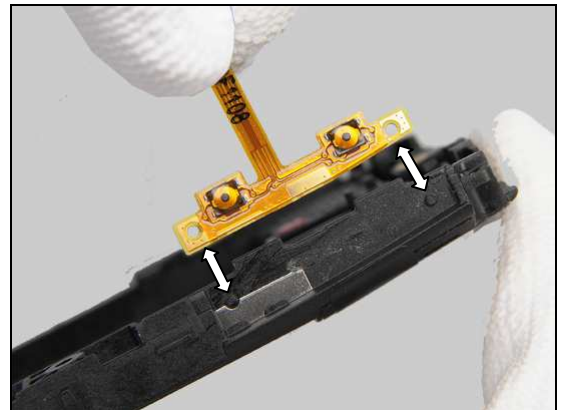


Replacement: Flash LED FPC & Flash LED FPC Adhesive Foil

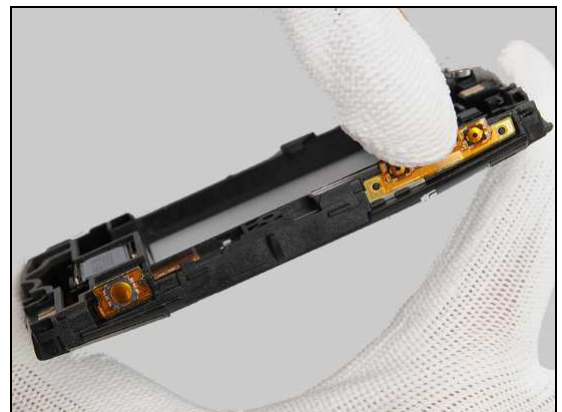
Gently peel off the protective film.



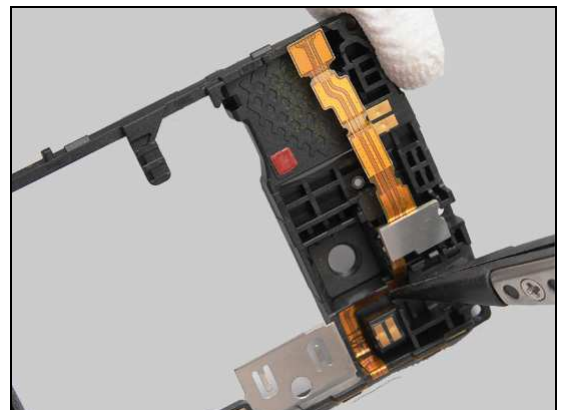
Place the side domes of the new Flash LED FPC in place by aligning the guiding holes with guiding pins.



Press to secure its attachment.

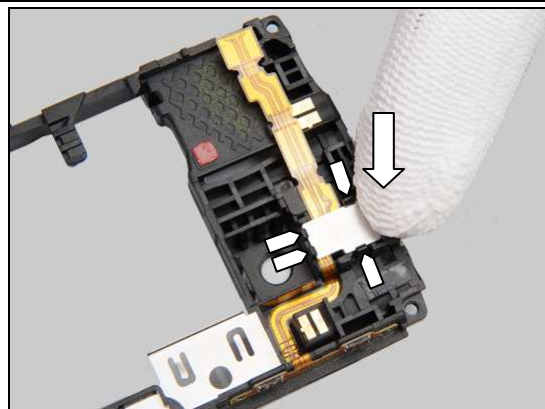


Bend the FPC and press along it with an ESD plastic tweezers to secure its attachment onto the surface of its cavity as shown.

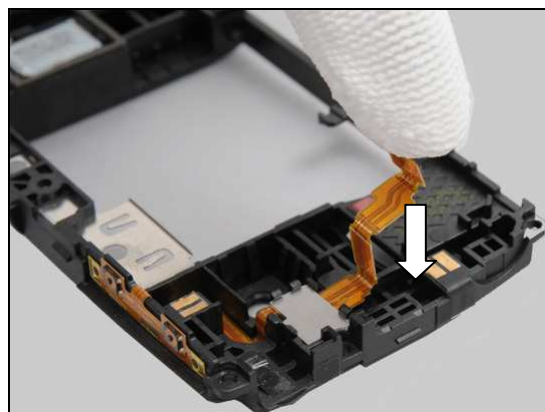


Replacement: Flash LED FPC & Flash LED FPC Adhesive Foil

Press the metal sheet into its cavity with hooks snapped using a finger.



Press down the FPC with a finger to make it folded.





Replacement

4.22 GPS Shielding Conductive Gasket

Follow the 3.1 – 3.3 Disassembly instructions.
Prepare the new GPS Shielding Conductive Gasket.
Follow the 5.5 – 5.7 Reassembly instructions.

REMOVAL

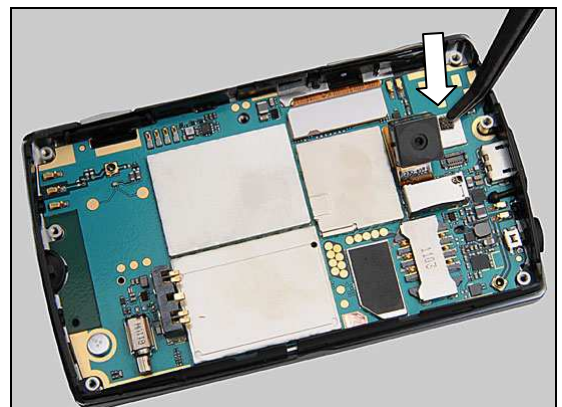
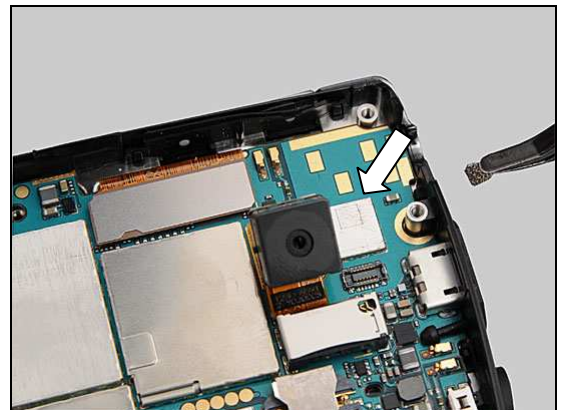
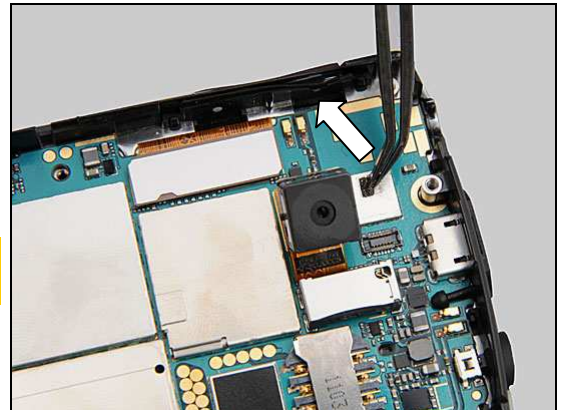
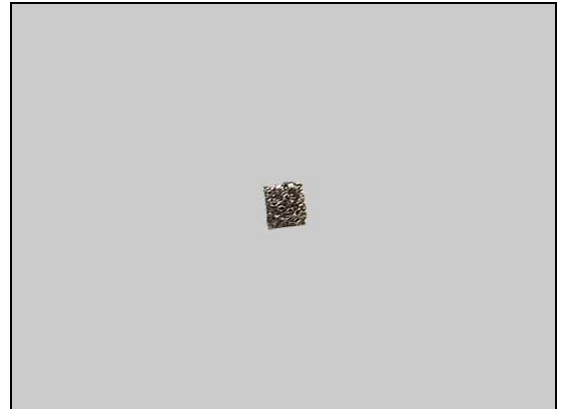
Detach and remove it using a Flex Film Assy Tool.

Scrap the GPS Shielding Conductive Gasket! It cannot be reused!

INSTALLATION

Attach a new GPS Shielding Conductive Gasket in the guiding line area as shown.

Press to secure its attachment.





Replacement

4.23 Hinge FPC & Hinge Assy Adhesive Foil

Follow the 3.1 – 3.7 Disassembly instructions.

Follow the 4.24 & 4.37 Removal instructions.

Prepare the new Hinge FPC & Hinge Assy Adhesive Foil.

Follow the 4.37 Installation instructions.

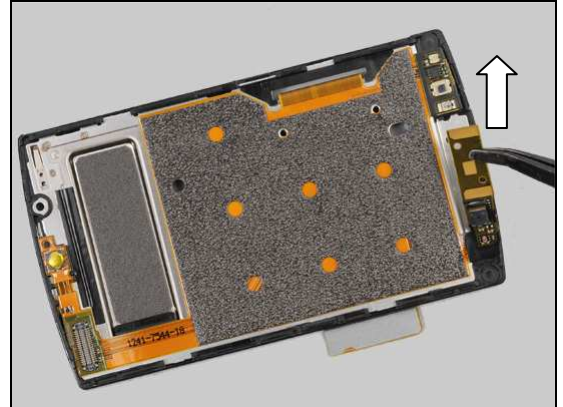
Follow the 5.1 – 5.7 Reassembly instructions.

Scrap the Hinge FPC! It cannot be reused!

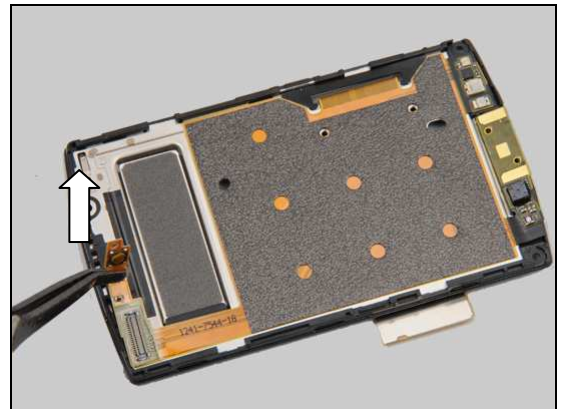


REMOVAL

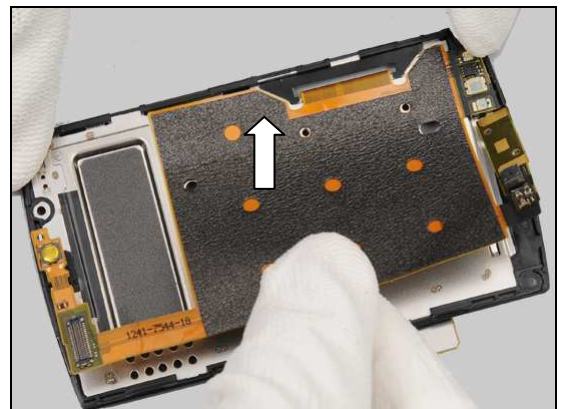
Detach the top sheet with a Flex Film Assy Tool.



Detach the bottom sheet with a Flex film Assy Tool.



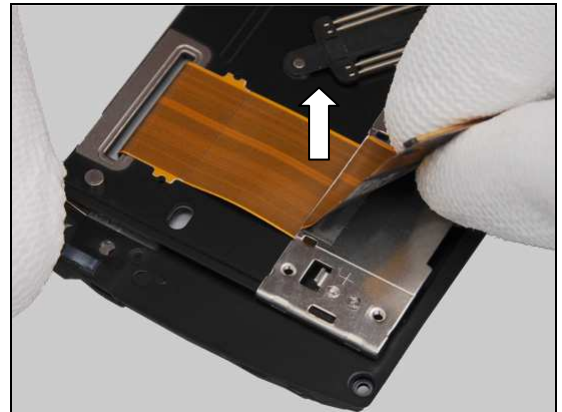
Gently detach the middle part using fingers.



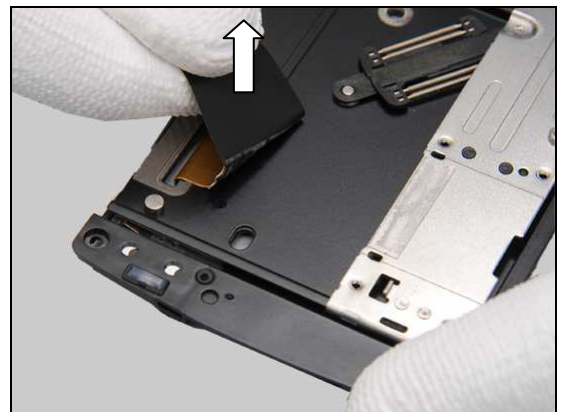


Replacement: Hinge FPC & Hinge Assy Adhesive Foil

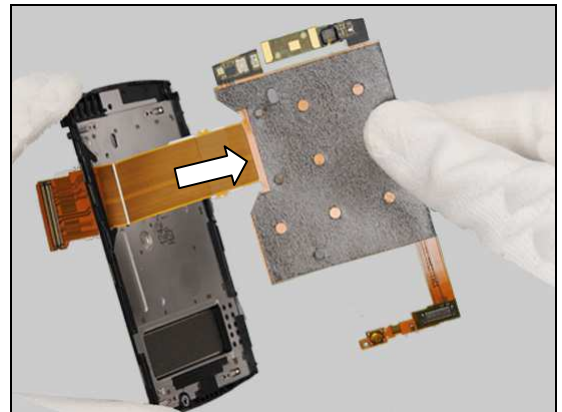
Detach the FPC from the slider using fingers.



Detach the FPC from the Hinge Assy using fingers.

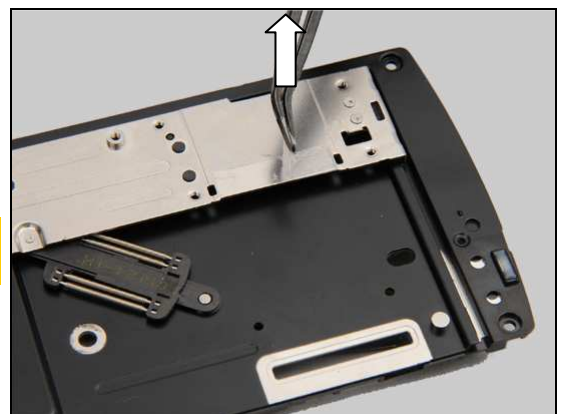


Remove the Hinge FPC through the hole.



Detach the Hinge Assy Adhesive Foil using a Flex Film Assy Tool.

Scrap the Hinge Assy Adhesive Foil! It cannot be reused!



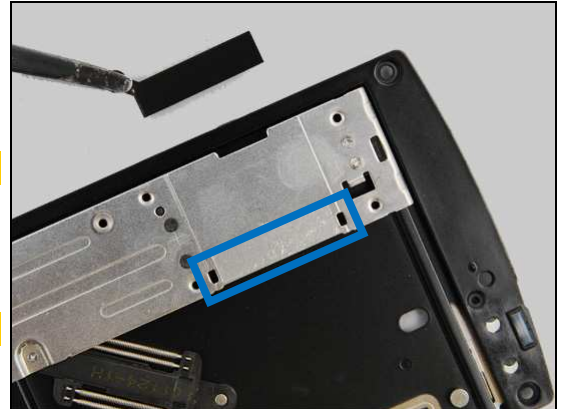
Replacement: Hinge FPC & Hinge Assy Adhesive Foil

INSTALLATION

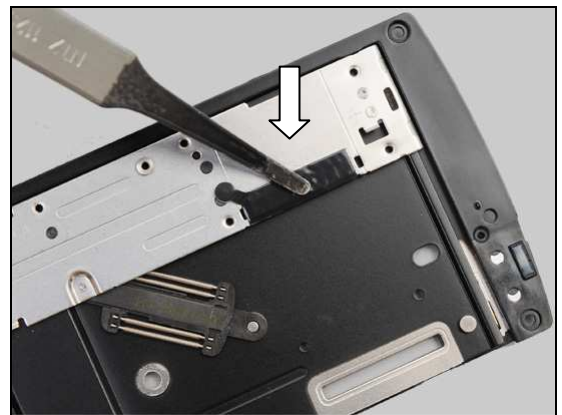
Clean all the residues of the adhesive before mounting!

Attach a new Hinge Assy Adhesive Foil between the two holes along the metal edge.

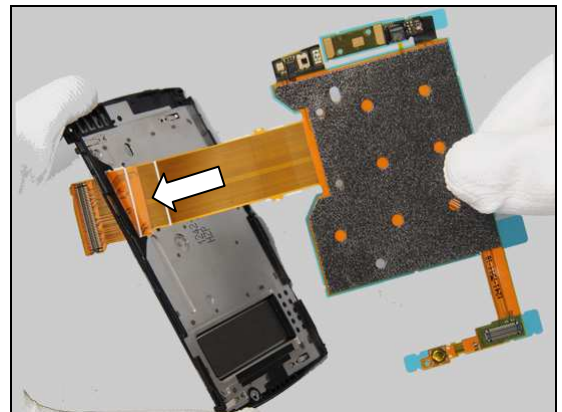
Do not attach the adhesive foil over the metal edge!



Press back and forth to secure its attachment.

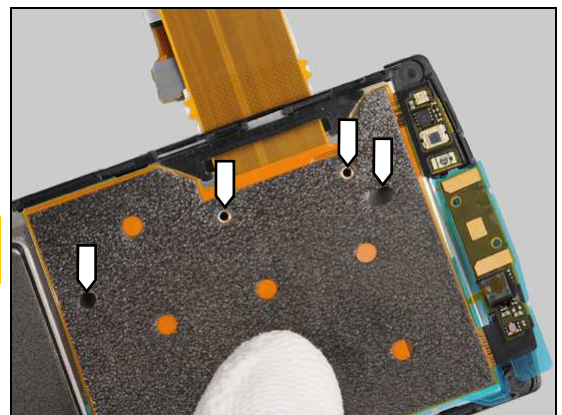


Mount a new Hinge FPC through the hole as shown.



Peel off half of the protective film and attach the Hinge FPC in its proper place as shown.

The four guiding holes must be aligned accurately between the Hinge FPC and Hinge Assy!



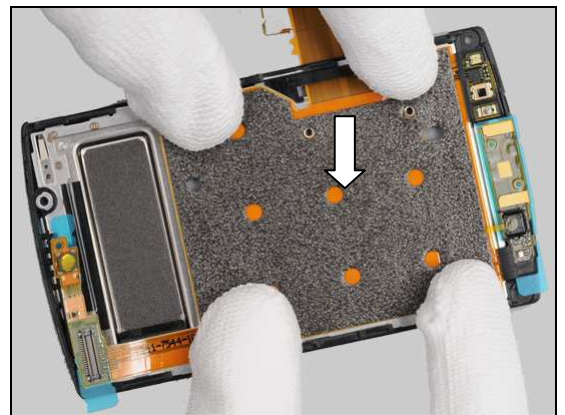


Replacement: Hinge FPC & Hinge Assy Adhesive Foil

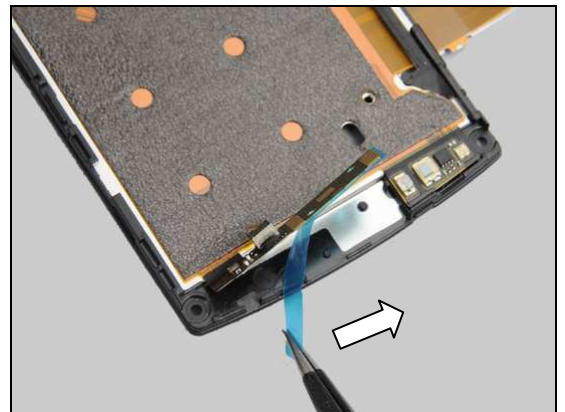
Gently peel off the rest part of the protective film.



Press the Hinge FPC back and forth to secure its solid attachment.

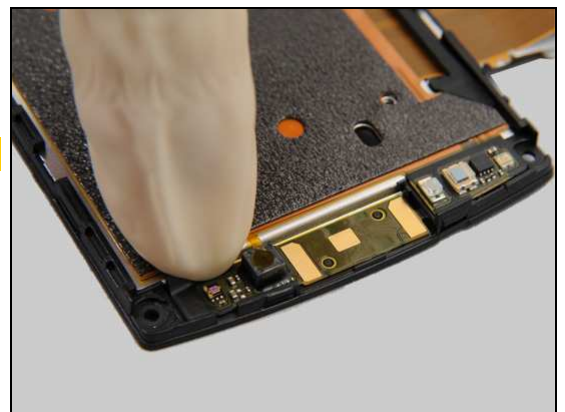


Peel off the protective film.



Wear Finger Cots when in action!

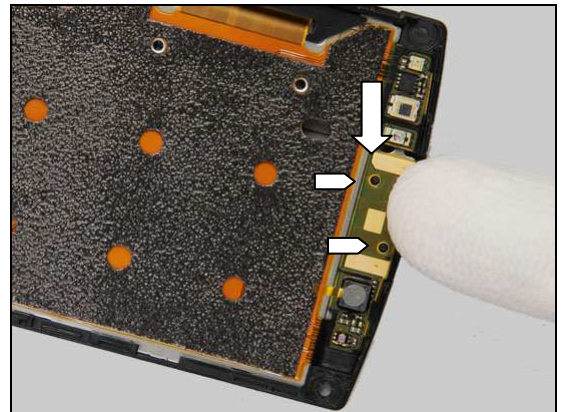
Press the FPC as shown to make the top sheet into its cavity.



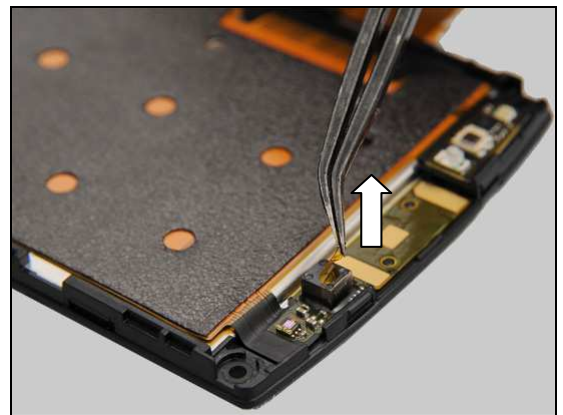


Replacement: Hinge FPC & Hinge Assy Adhesive Foil

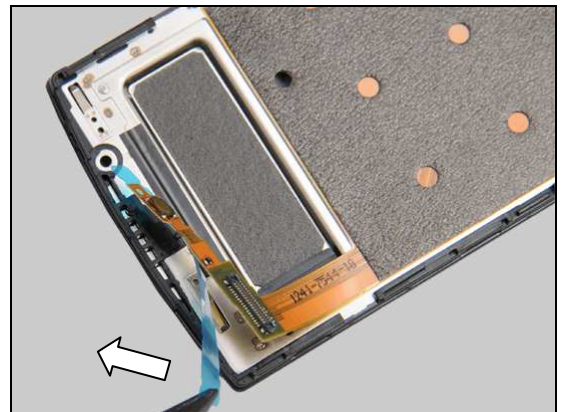
Press the top sheet to secure its attachment by aligning the guiding holes with guiding pins as shown.



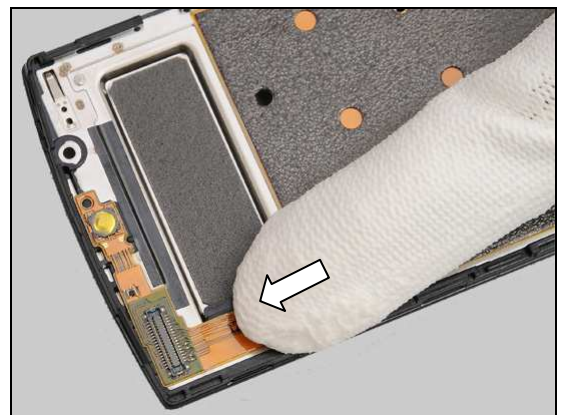
Peel off the protective film of VGA camera.



Peel off the protective film.



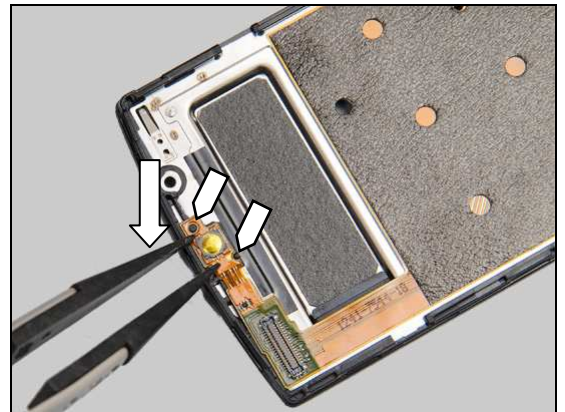
Press along the FPC as shown to secure the proper position of the BtB connector, and then press the BtB connector to secure its attachment.





Replacement: Hinge FPC & Hinge Assy Adhesive Foil

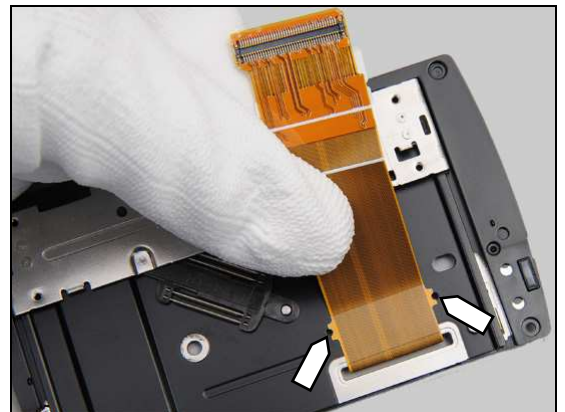
Place the bottom sheet in the proper position by aligning the two guiding holes with the guiding pins, and then press to secure its attachment.



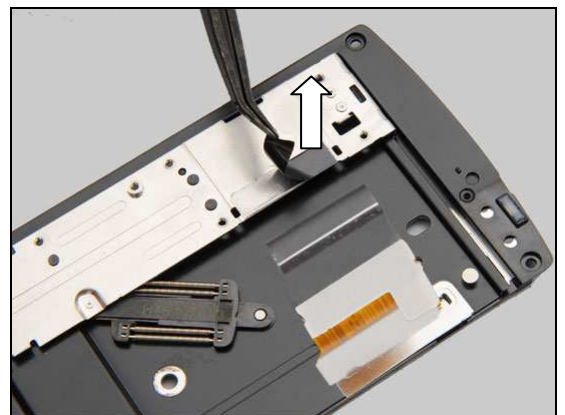
Turn the Hinge Assy over and peel off the protective film.



Accurately align the Hinge FPC with the two guiding holes and press to secure solid attachment.



Peel off the protective film.



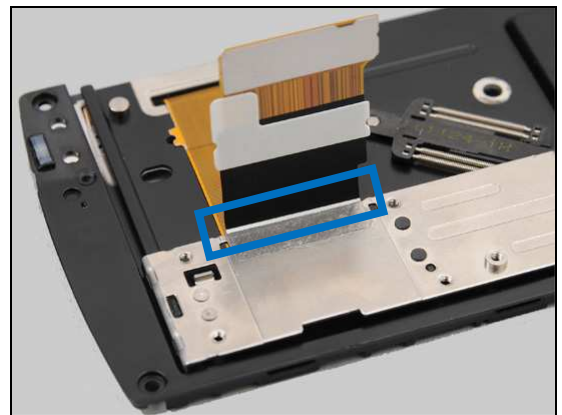


Replacement: Hinge FPC & Hinge Assy Adhesive Foil

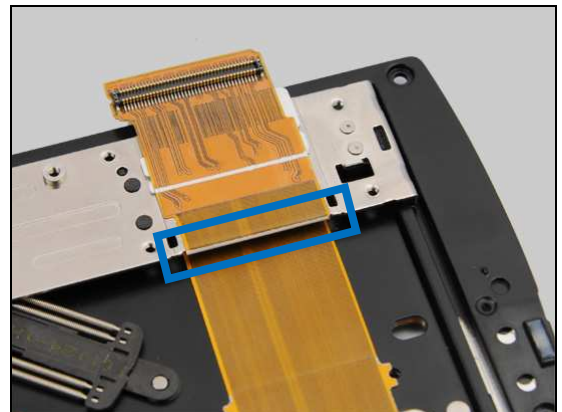
Bend the Hinge FPC and insert it beneath the metal slider of the Hinge Assy.



Align the white line with the metal edge as shown.

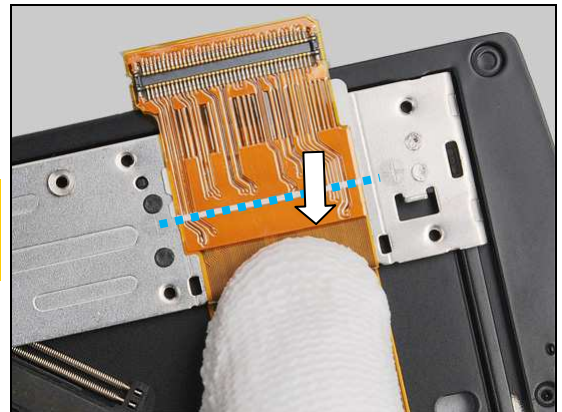


Bend the FPC and align the white line with the metal edge as shown.



Press the FPC to secure its attachment using a finger.

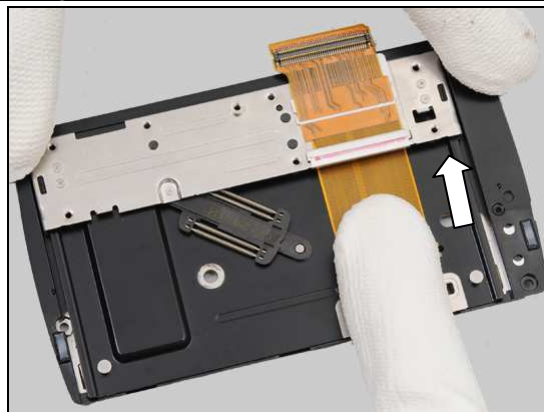
The white line on the Hinge FPC should be parallel with the supposed line between the two cross signs as shown!



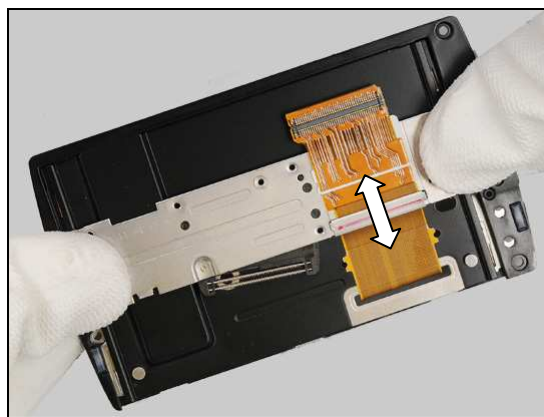
Replacement: Hinge FPC & Hinge Assy Adhesive Foil

Follow the 4.23 Installation instructions.

Press along the FPC to secure its attachment onto the Hinge Assy.



Open and close the slider several times to check the attachment of the FPC.





Replacement

4.24 Hinge FPC Clip

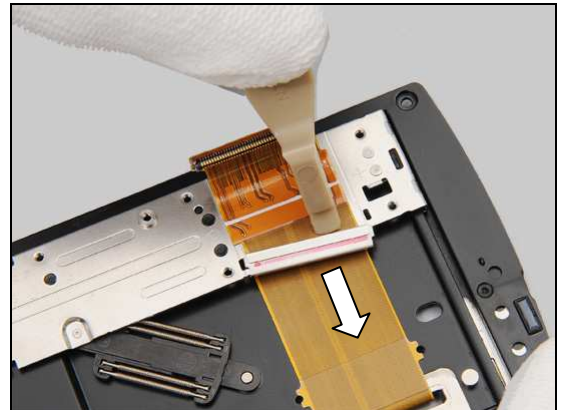
Follow the 3.1 – 3.7 Disassembly instructions.

Prepare the new Hinge FPC Clip.

Follow the 5.1 – 5.7 Reassembly instructions.

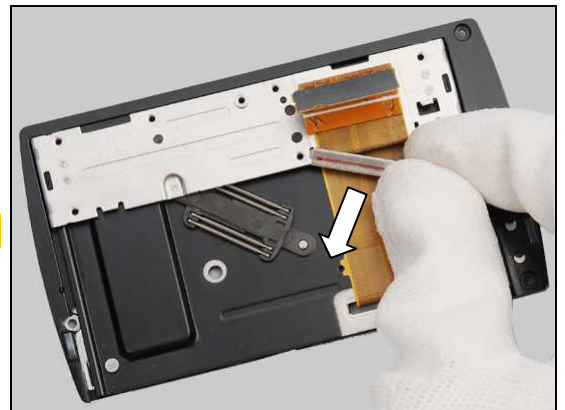
REMOVAL

Push off the Hinge FPC Clip using a Front Opening Tool.



Remove it by fingers.

Scrap the Hinge FPC Clip! It cannot be reused!

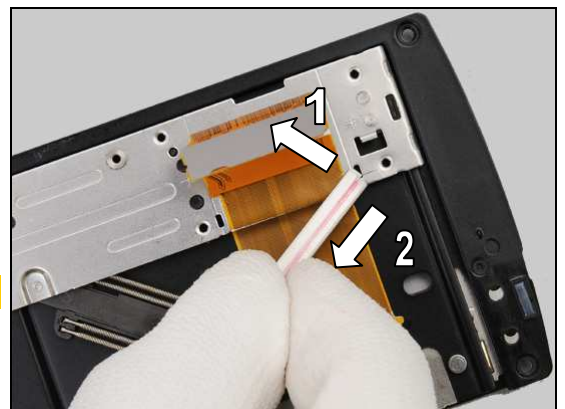


INSTALLATION

Push one of the hooks of the Hinge FPC Clip into the hole as shown (1).

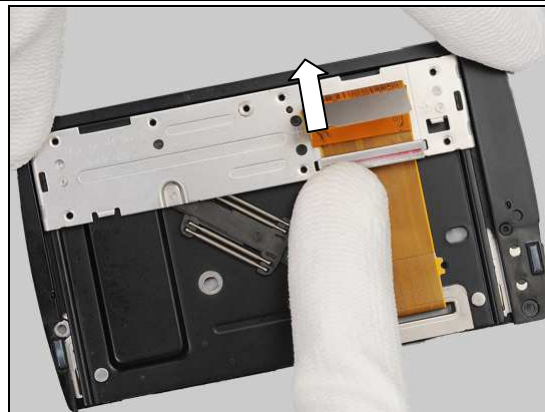
Pull the clip as shown to secure its proper position (2).

Do not scratch the FPC!



Replacement: Hinge FPC Clip

Push the other hook into its hole as shown.



Replacement

4.25 Loud Speaker Mesh

Follow the 3.1 Disassembly instructions.

Prepare the new Loud Speaker Mesh.

Follow the 5.7 Reassembly instructions.

REMOVAL

Detach and remove it with a Flex Film Assy Tool.

Scrap the Loud Speaker Mesh! It cannot be reused!

Do not damage the antenna film when removing!



INSTALLATION

Attach a new Loud Speaker Mesh in place.

Make sure to align the speaker mesh outlet with the hole!



Press to secure its solid attachment.





Replacement

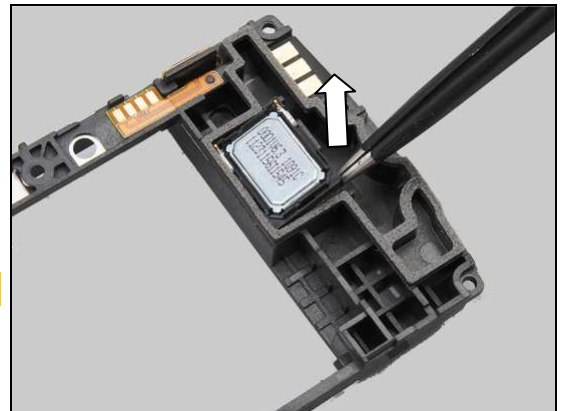
4.26 Loudspeaker & Loud Speaker Gasket

*Follow the 3.1 – 3.3 Disassembly instructions.
Prepare the new Loudspeaker & Loud Speaker Gasket.
Follow the 5.5 – 5.7 Reassembly instructions.*

REMOVAL

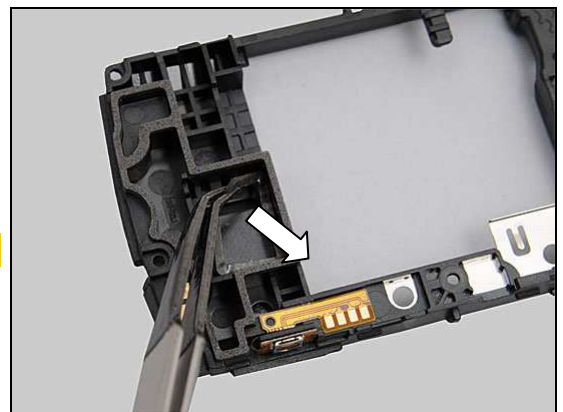
Lift up the Loudspeaker by inserting a pair of tweezers at the corner as shown and remove it.

Do not damage the Loudspeaker!



Remove the Loud Speaker Gasket using a Flex Film Assy Tool.

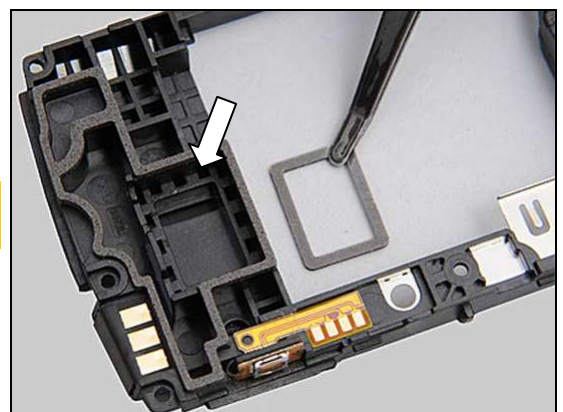
Scrap the Loud Speaker Gasket! It cannot be reused!



INSTALLATION

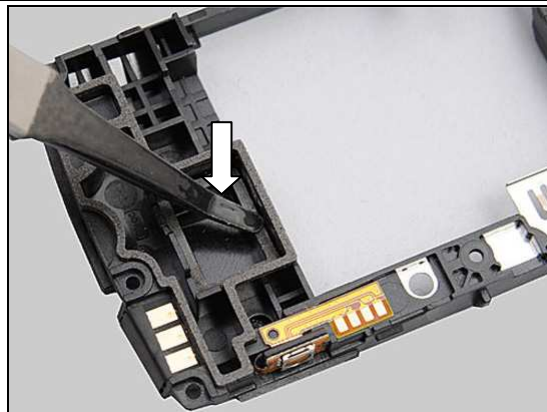
Clean the residues of Loud Speaker Gasket before mounting!

Place a new Loud Speaker Gasket in place as shown.

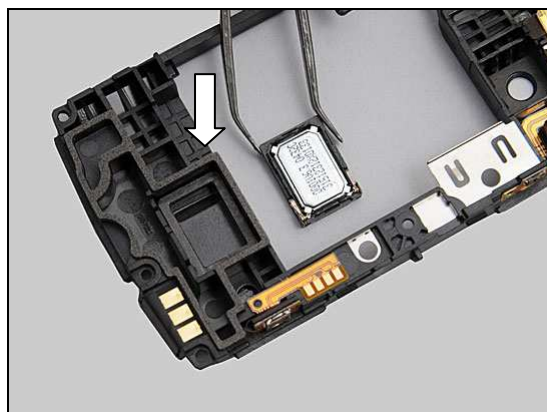


Replacement: Loudspeaker & Loud Speaker Gasket

Press to secure its attachment.



Place a new Loudspeaker in its cavity with the two contact pins towards the camera FPC.



Press to secure its attachment using a finger.





Replacement

4.27 Main Antenna Switch Protective Film

Follow the 3.1 Disassembly instructions.

Prepare the new Main Antenna Switch Protective Film.

Follow the 5.7 Reassembly instructions.

REMOVAL

Detach and remove it using a Flex Film Assy Tool.

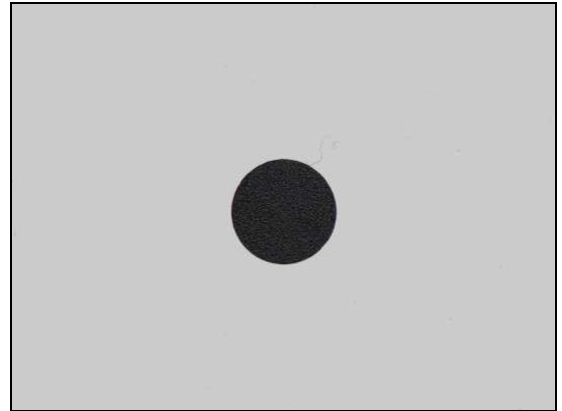
Scrap the Main Antenna Switch Protective Film! It cannot be reused!

Do not damage the antenna film when removing!

INSTALLATION

Attach a new Main Antenna Switch Protective Film in its proper place as shown.

Press to secure its attachment.



Replacement

4.28 Main Keypad

Prepare the new Main Keypad.

Power off the phone when in action!



REMOVAL

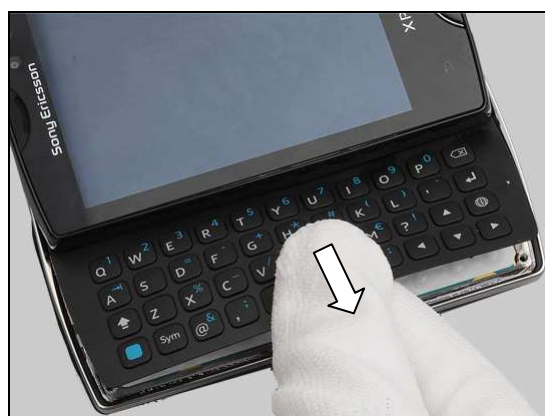
Open the slider.

Insert a Guitar Pick and slide around the Main Keypad to detach it.



Gently remove the Main Keypad using fingers.

Scrap the Main Keypad! It cannot be reused!



INSTALLATION

Make sure the residues of the Main Keypad adhesive foil is removed before mounting!

Prepare a new Main Keypad and identify the two guiding pins as shown.



Replacement: Main Keypad

Insert the Main Keypad under the upper module until it makes contact with the stoppers.



Press on all sides of the Main Keypad back and forth as shown to secure its solid attachment.



Replacement

4.29 Main Keypad Domesheet

Follow the 3.1 – 3.5 Disassembly instructions.
Prepare the new Main Keypad Domesheet.
Follow the 5.3 – 5.7 Reassembly instructions.

REMOVAL

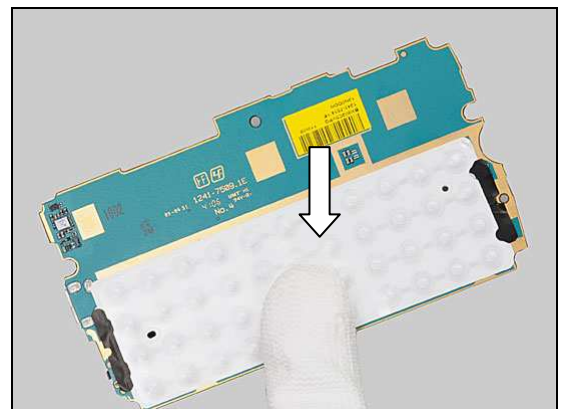
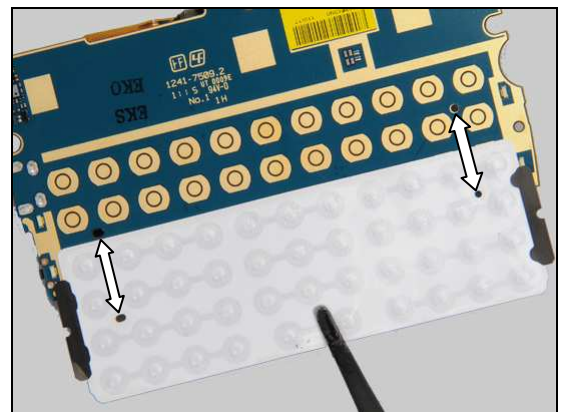
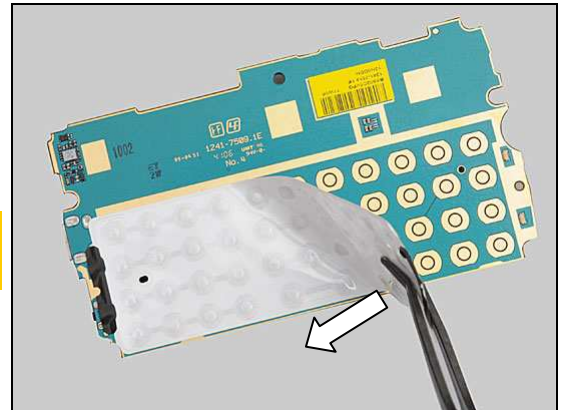
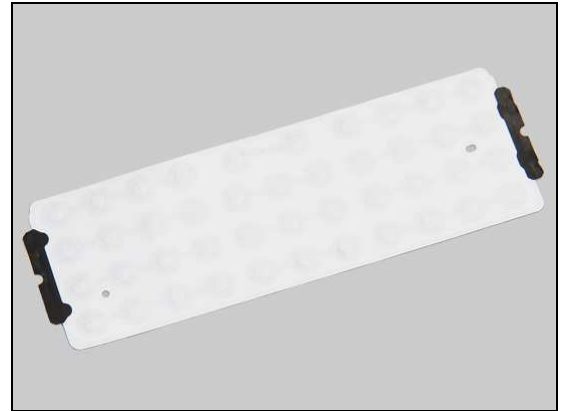
Detach and remove it with a Flex Film Assy Tool.

**Scrap the Main Keypad Domesheet! It cannot be reused.
Do not damage the PBA!**

INSTALLATION

Attach a new Main Keypad Domesheet by aligning with the guiding holes as shown.

Press back and forth to secure its solid attachment.



Replacement

4.30 Micro USB Cover

Follow the 3.1 – 3.5 Disassembly instructions.

Prepare the new Micro USB Cover.

Follow the 5.3 – 5.7 Reassembly instructions.

REMOVAL

Push the Micro USB Cover as shown to remove it.



INSTALLATION

Insert the new Micro USB Cover through the hole.



Hold and slide it into its cavity.



Replacement

4.31 Power Key

Follow the 3.1 – 3.5 Disassembly instructions.

Prepare the new Power Key.

Follow the 5.3 – 5.7 Reassembly instructions.

REMOVAL

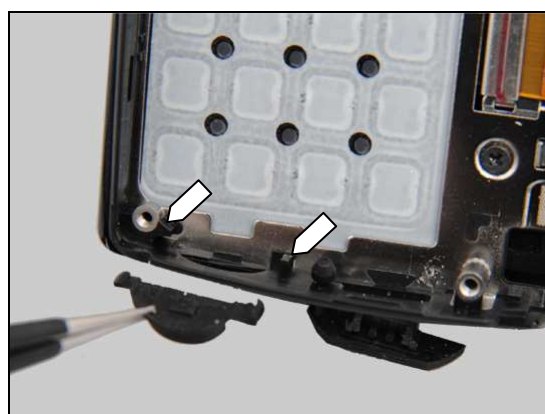
Remove the Power Key by releasing the guiding pins from its cavity using a pair of tweezers.



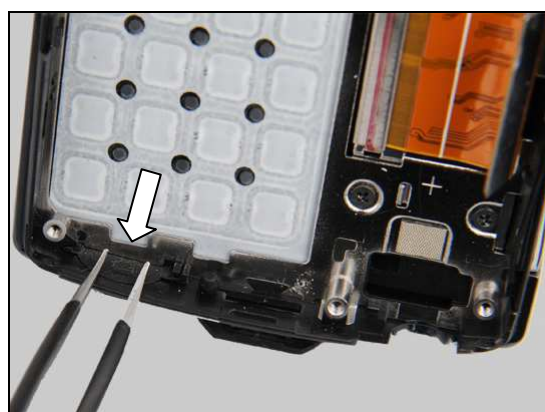
INSTALLATION

Mount a new Power Key in place.

Insert one of the guiding pins into its cavity, then mount the Power Key into its hole, and finally insert another pin.



Press to secure its position.



Replacement

4.32 Receiver Deco

Follow the 3.1 Disassembly instructions.

Prepare the new Receiver Deco.

Follow the 5.7 Reassembly instructions.

REMOVAL

Insert a pair of tweezers and gently push to the end and lift up the Receiver Deco as shown.

Scrap the Receiver Deco! It cannot be reused!

Do not damage the Touch/Display Front Cover Assy!



INSTALLATION

Mount a new Receiver Deco in the proper place as shown.



Press for 10 seconds to secure its solid attachment.



Replacement

4.33 Second Mic Mesh

Follow the 3.1 – 3.3 Disassembly instructions.

Prepare the new Second Mic Mesh.

Follow the 5.5 – 5.7 Reassembly instructions.

REMOVAL

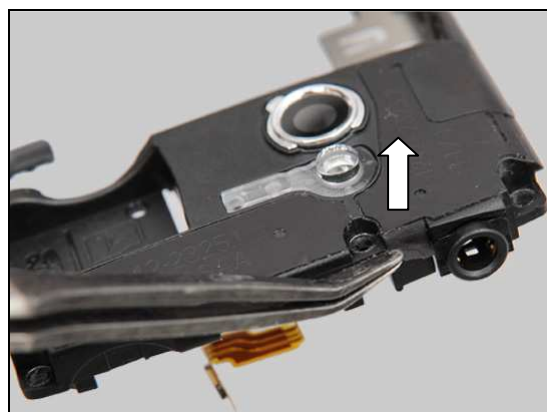
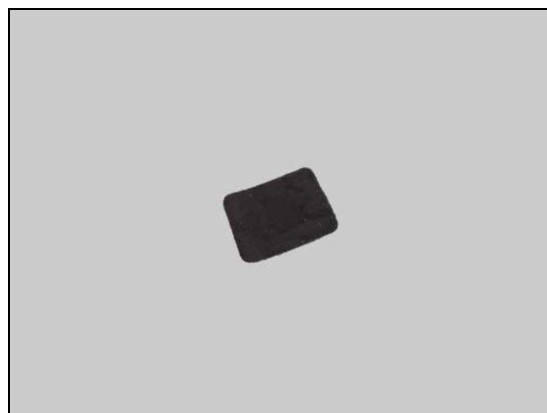
Peel off the Second Mic Mesh by using a Flex Film Assy Tool.

Pull it out by using a Flex Film Assy Tool.

Scrap the Second Mic Mesh! It cannot be reused!

Do not damage the antenna film!

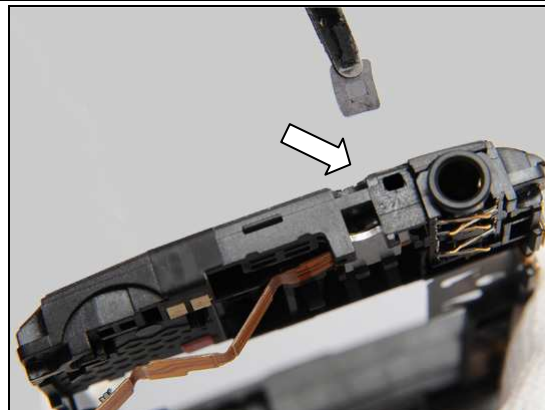
Press the antenna film to secure its attachment.



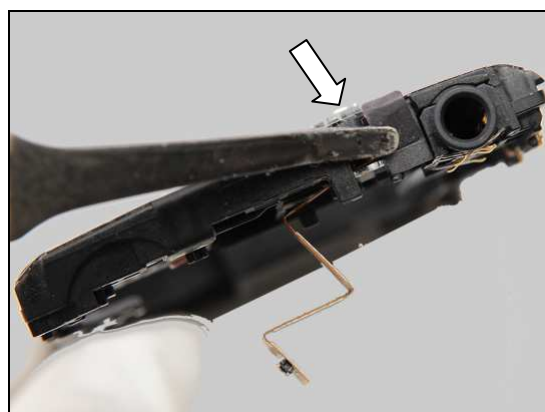
Replacement: Second Mic Mesh

INSTALLATION

Place a new Second Mic Mesh aligning with the guiding line as shown.



Press to secure its attachment.



Bend the Second Mic Mesh over the antenna film and press to secure its attachment.





Replacement

4.34 Shielding Can Lid ABB

Follow the 3.1 – 3.5 Disassembly instructions.

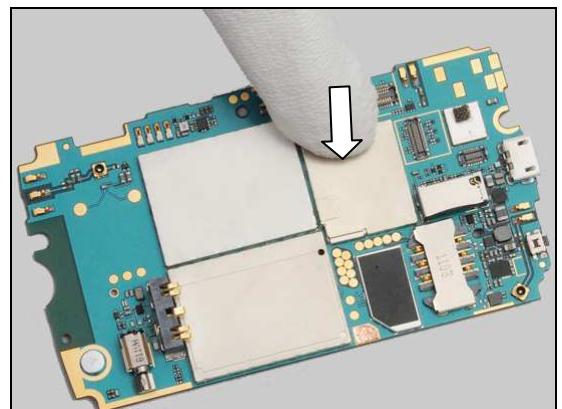
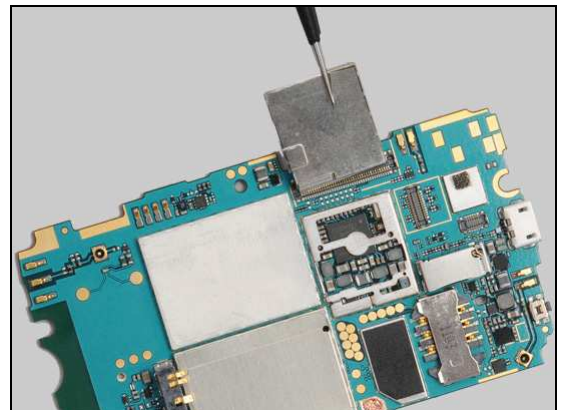
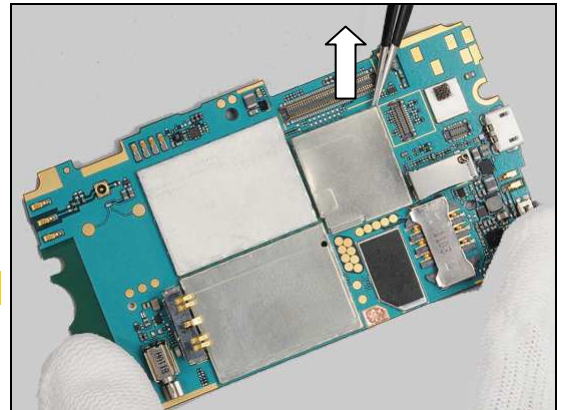
Prepare the new Shielding Can Lid ABB.

Follow the 5.3 – 5.7 Reassembly instructions.

REMOVAL

Unsnap the corners of the Shielding Can Lid ABB using a pair of tweezers and pull upwards to remove it.

Scrap the Shielding Can Lid ABB! It cannot be reused!



INSTALLATION

Place a new Shielding Can Lid ABB in the proper direction as shown.

Press to snap it.



Replacement

4.35 Shielding Can Lid DBB

Follow the 3.1 – 3.5 Disassembly instructions.

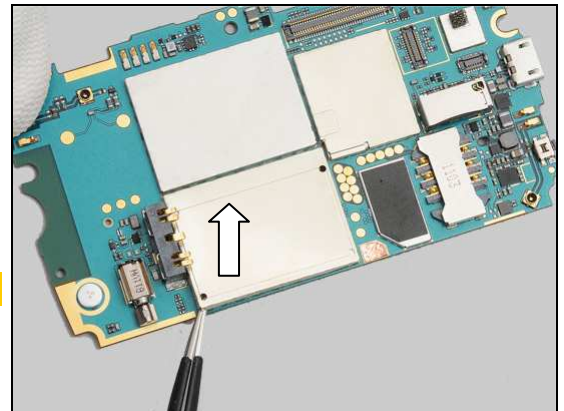
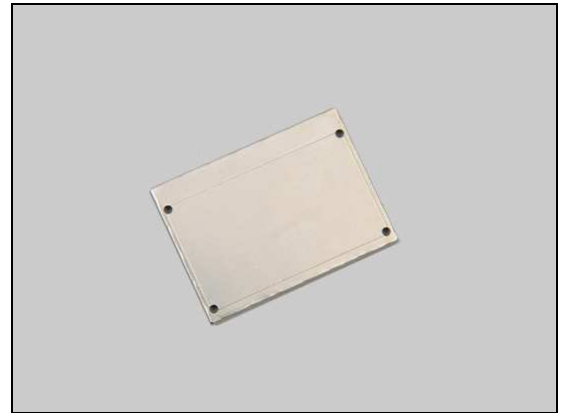
Prepare the new Shielding Can Lid DBB.

Follow the 5.3 – 5.7 Reassembly instructions.

REMOVAL

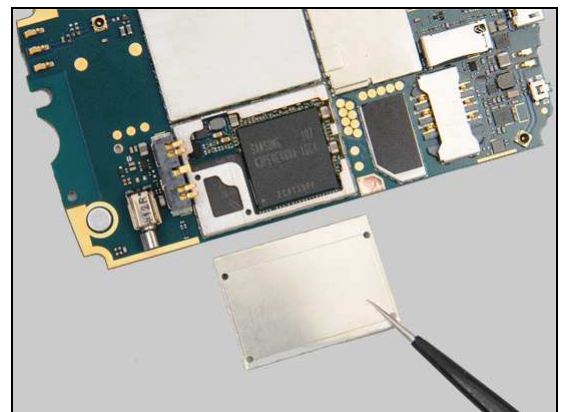
Unsnap the corners of the Shielding Can Lid DBB using a pair of tweezers and pull upwards to remove it.

Scrap the Shielding Can Lid DBB! It cannot be reused!

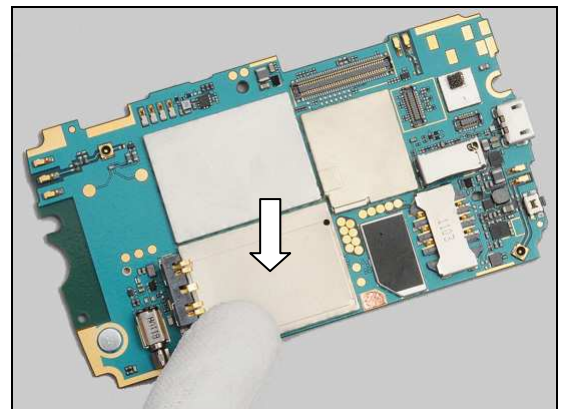


INSTALLATION

Place a new Shielding Can Lid DBB in the proper direction as shown.



Press to snap it.





Replacement:

4.36 Shielding Can Lid RF

Follow the 3.1 – 3.5 Disassembly instructions.

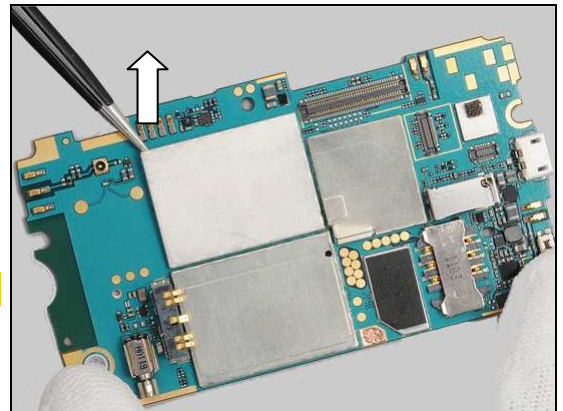
Prepare the new Shielding Can Lid RF.

Follow the 5.3 – 5.7 Reassembly instructions.

REMOVAL

Unsnap the corners of the Shielding Can Lid RF using a pair of tweezers and pull upwards to remove it.

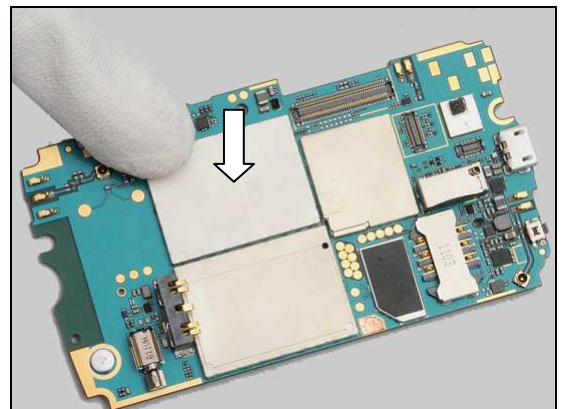
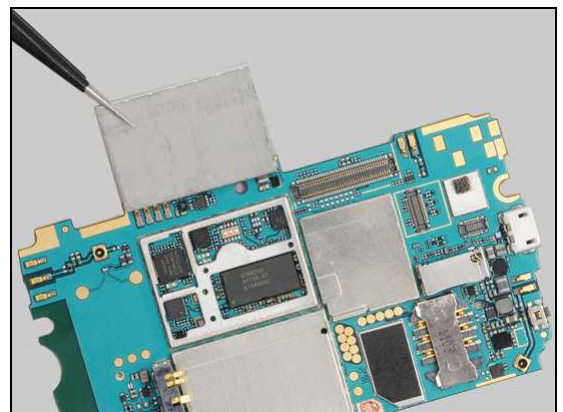
Scrap the Shielding Can Lid RF! It cannot be reused!



INSTALLATION

Place a new Shielding Can Lid RF in place.

Press to snap it.



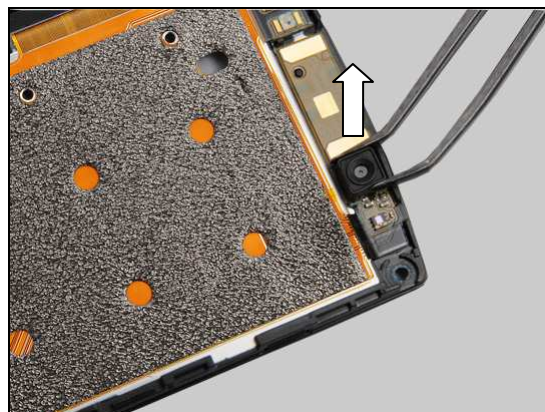
Replacement

4.37 VGA Camera Rubber Carrier

*Follow the 3.1 – 3.7 Disassembly instructions.
Prepare the new VGA Camera Rubber Carrier.
Follow the 5.1 – 5.7 Reassembly instructions.*

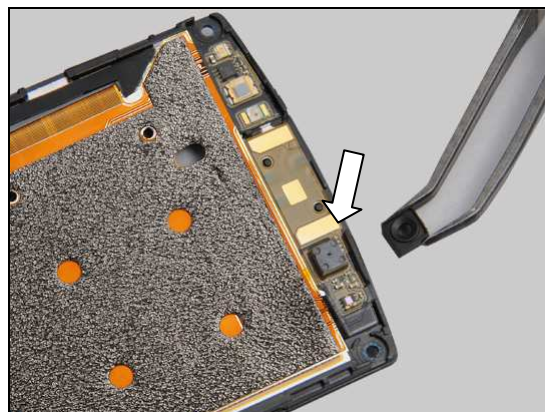
REMOVAL

Remove the VGA Camera Rubber Carrier with a Flex Film Assy Tool.

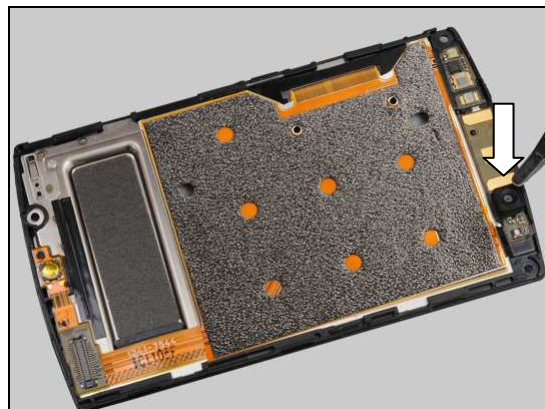


INSTALLATION

Mount a new VGA Camera Rubber Carrier in place.



Press gently to assure its position.



Replacement

4.38 Volume Key

Follow the 3.1 – 3.4 Disassembly instructions.

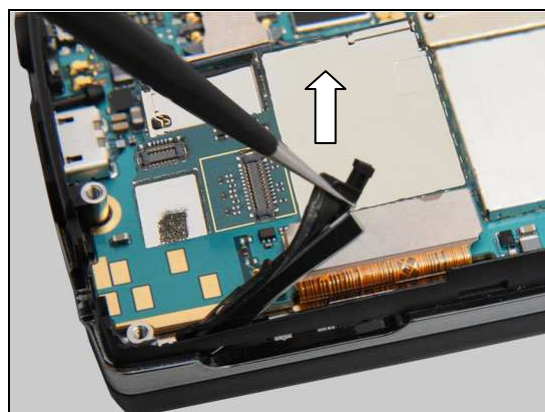
Prepare the new Volume Key.

Follow the 5.4 – 5.7 Reassembly instructions.

REMOVAL

Clamp the Volume Key to separate adhesive area as shown, and then remove it by releasing the guiding pins from its cavity using a pair of tweezers.

Scrap the Volume Key in case of adhesive missing!

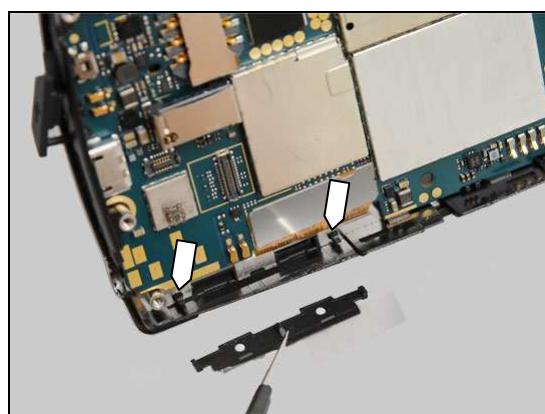


INSTALLATION

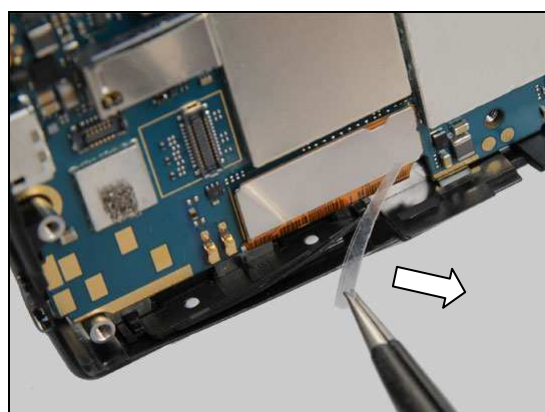
Clean the residues of the adhesive on the edge of the Lower Front Cover Assy before mounting!

Mount a new Volume Key in place.

Insert one of the guiding pins into its cavity, then mount the Volume key into its hole, and finally insert another pin.

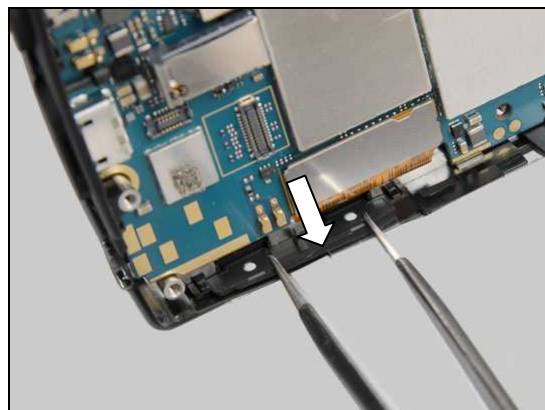


Peel off the protective film of the adhesive.



Replacement: Volume Key

Press to assure its position and attachment.





Replacement

4.39 Water Indicator

Follow the 3.1 – 3.3 Disassembly instructions.

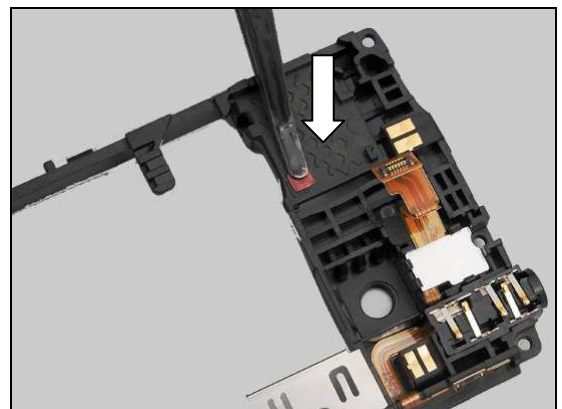
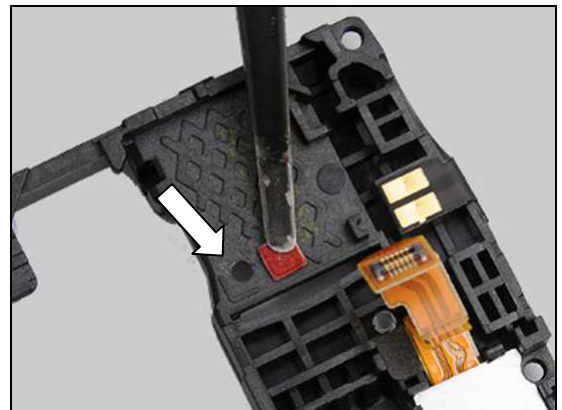
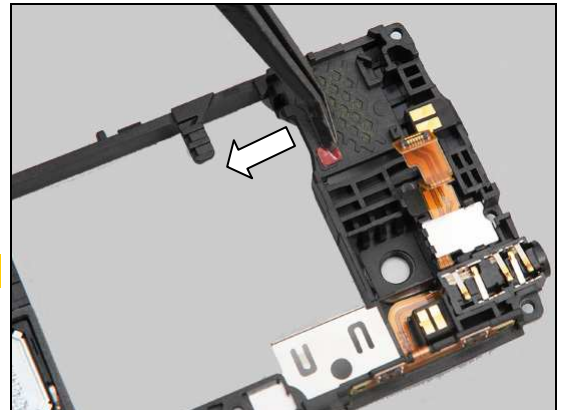
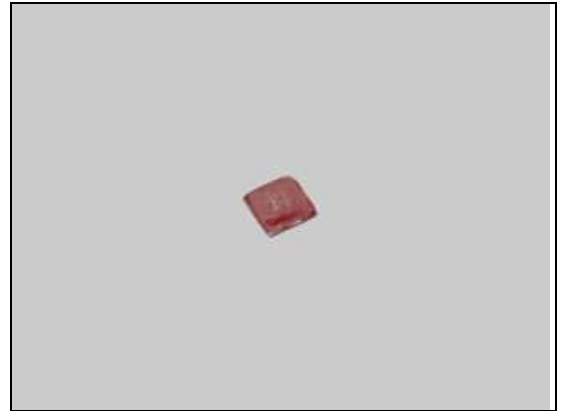
Prepare the new Water Indicator.

Follow the 5.5 – 5.7 Reassembly instructions.

REMOVAL

Detach and remove it with a Flex Film Assy Tool.

Scrap the Water Indicator! It cannot be reused!



INSTALLATION

Place a new Water Indicator in place.

Press to secure its attachment.



Replacement

4.40 WLAN Shielding Adhesive Foil

Follow the 3.1 Disassembly instructions.

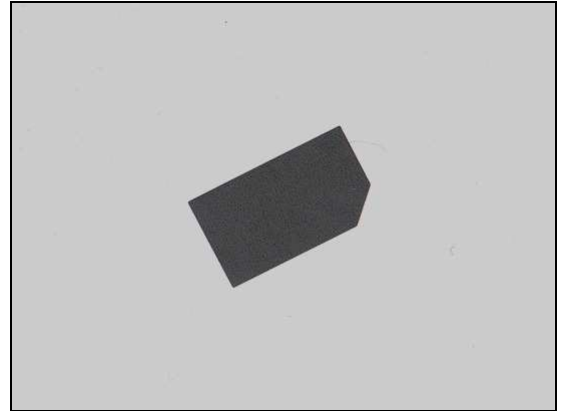
Prepare the new WLAN Shielding Adhesive Foil.

Follow the 5.7 Reassembly instructions.

REMOVAL

Detach and remove it with a Flex Film Assy Tool.

Scrap the WLAN Shielding Adhesive Foil! It cannot be reused!



INSTALLATION

Attach a new WLAN Shielding Adhesive Foil by aligning the corner as shown.



Press to secure its attachment.





Replacement

4.41 Board Swap

4.41.1 Board Swap- Replacement

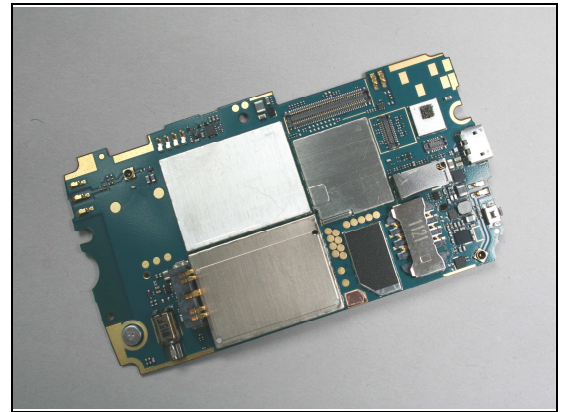
Follow the 3.1 – 3.5 Disassembly instructions.

Replace the Swap Board.

Reuse the Camera.

Follow the 5.3 – 5.7 Reassembly instructions.

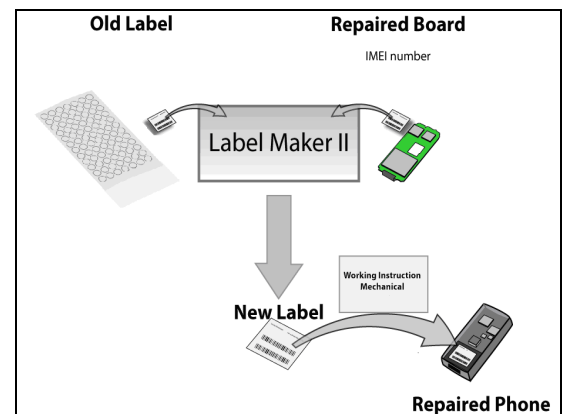
Startup the unit to initialize settings, before performing
Customize Phone in Emma



4.41.2 Board Swap – Change Label

CHANGE LABEL

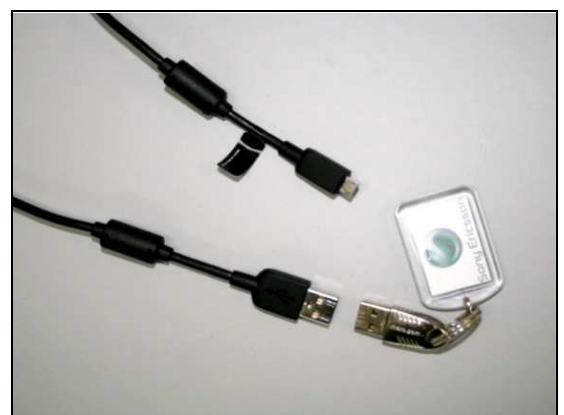
*Follow the instructions in the Generic Repair Manual –
Build swap for change of label.*



4.41.3 Board Swap – Customize of Software

CUSTOMIZE OF SOFTWARE

*Follow the instructions in the Generic Repair Manual –
Build swap for customization of the software.*

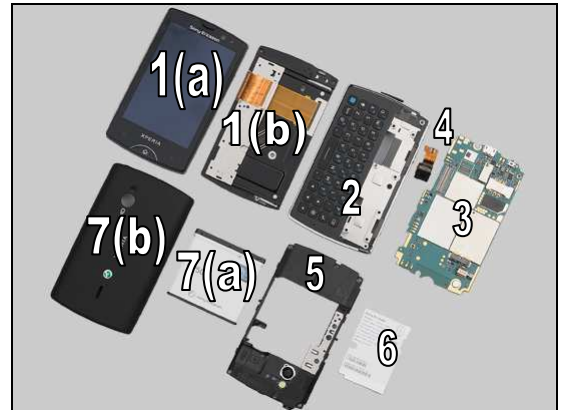




5 Reassembly

The reassembly is done in the following order:

1. Touch/Display Front Cover Assy (a) and Hinge Assy (b)
2. Lower Front Cover Assy
3. Main PBA
4. Main Camera
5. Lower Rear Cover Assy
6. Core Unit Label
7. Battery (a) & Battery Cover (b)



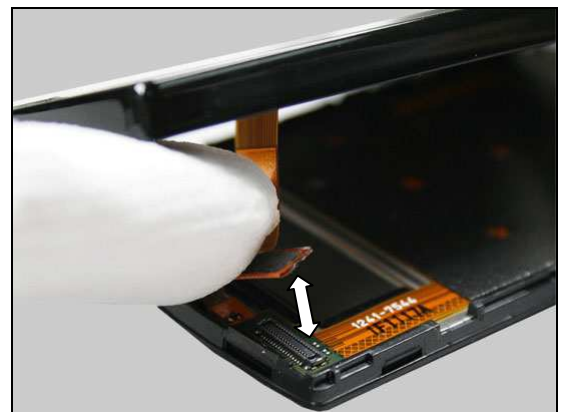
5.1 Touch/Display Front Cover Assy & Hinge Assy

Prepare the Touch/Display Front Cover Assy and the Hinge Assy.

Follow the 4.17 Removal&Installation instructions to change the new Conductive Cushion on the Touch/Display Front Cover Assy in case of the cushion missing or damaged.



Align and snap the BtB connector using fingers.

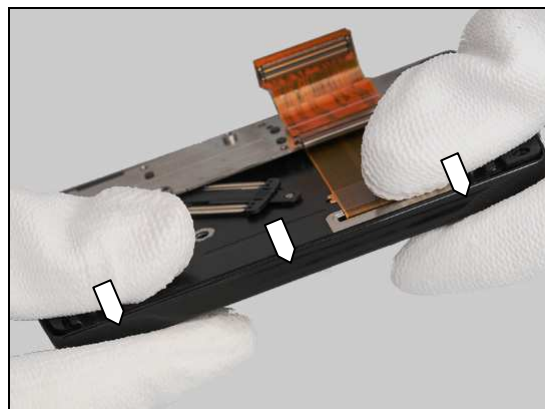


Press this side to snap the three hooks as shown.

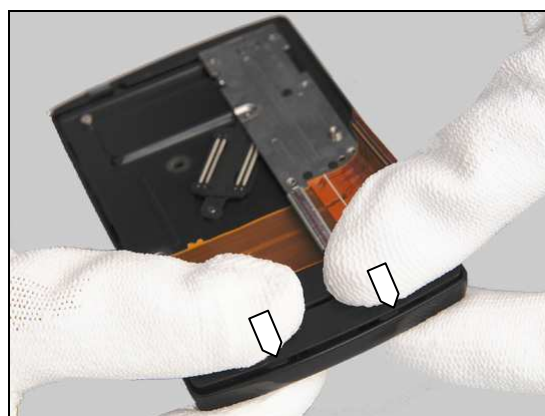


Reassembly

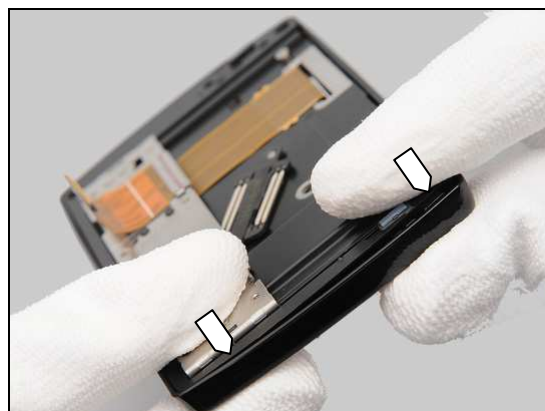
Press the opposite side to snap the other three hooks as shown.



Press the top side to snap the two hooks as shown.

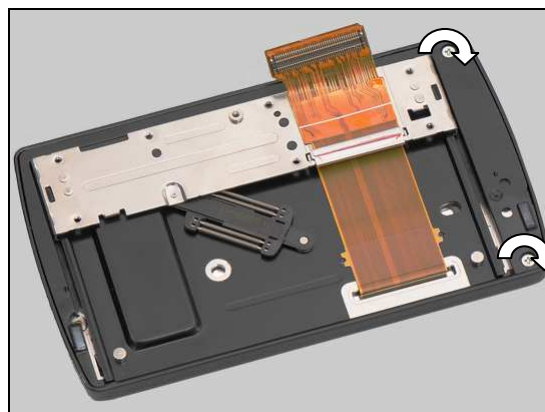


Press the bottom side to snap the two hooks as shown.



Apply 10 Ncm torque when tightening the two Screws M1.4X2.0 with Bits (JCIS No 0).

Take new screws!

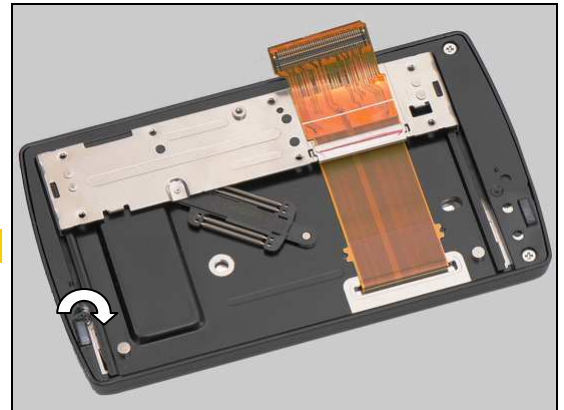




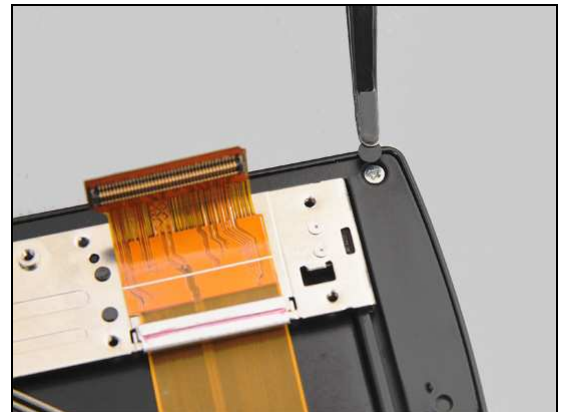
Reassembly

Apply 12 Ncm torque when tightening the Screw Other
Len:1.6 Diam:1.4with Bits (JCIS No 0).

Take new screws!

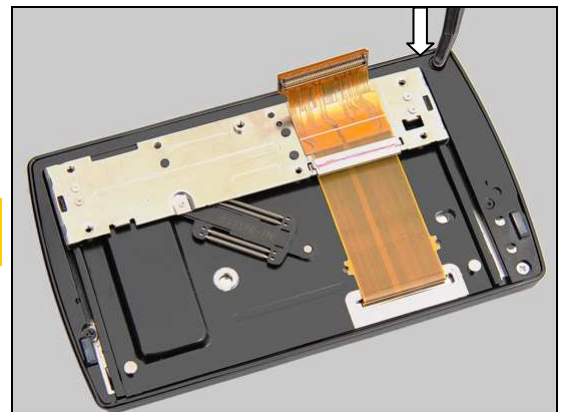


Place the Screw Cap properly.



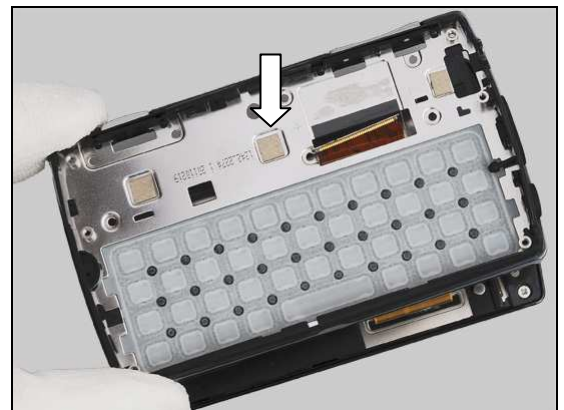
Press to secure its attachment.

**Keep the position of the slider as shown, and then
continue with the next actions!**



5.2 Lower Front Cover Assy

Mount the Lower Front Cover Assy onto the upper module
by threading the Hinge FPC through the hole.



Reassembly

Apply 14 Ncm torque when tightening the seven Screws
Other Len:1.6 Diam:1.4 with Bits (JCIS No 0).

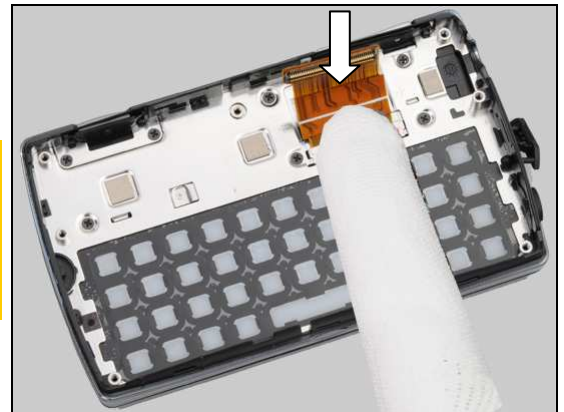
Take new screws!



Press the FPC to attach it onto the Lower Front Cover Assy.

Reuse the residues of adhesive on the Lower Front Cover Assy and/or FPC!

If the Hinge FPC is new, peel off the protective paper on the FPC and clean the residues of adhesive on the Lower Front Cover Assy before this action!

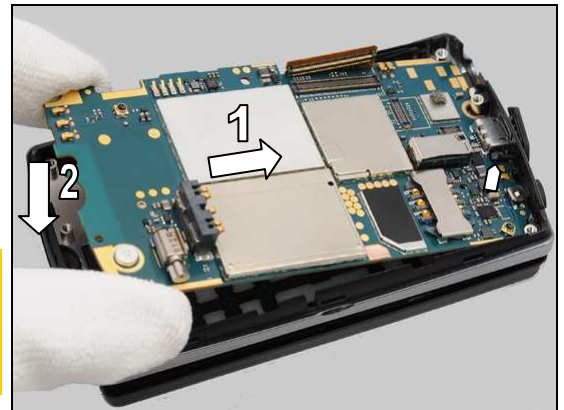


5.3 Main PBA

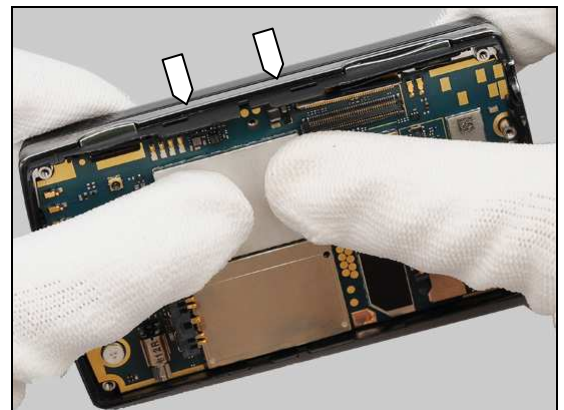
Hold the Main PBA at approximately 30 degrees and insert the top of it into the Lower Front Cover Assy as shown (1).
Then place it into the Lower Front Cover Assy (2).

The Main PBA should be beneath the pin of the Micro USB Cover.

Make sure the Micro USB Connector is mounted into the outlet.

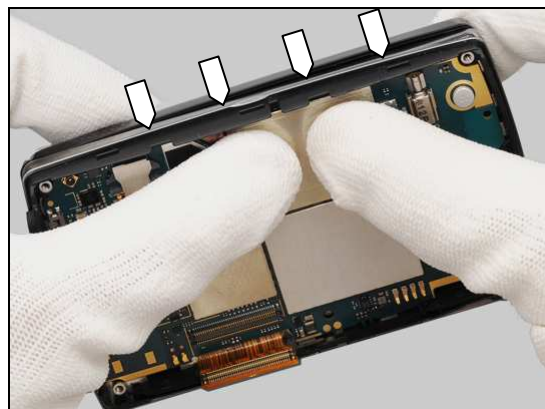


Press this side to snap the two hooks.



Reassembly

Press the opposite side to snap the four hooks.



Press the bottom side to snap this hook.

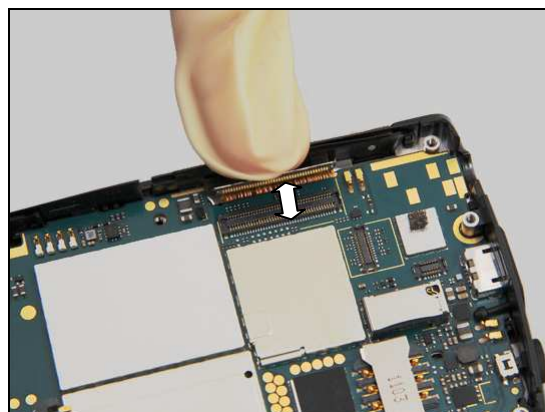


Press the Micro USB Cover into its position.



Wear Finger Cots when in action!

Snap the BtB connector using a finger.



Reassembly

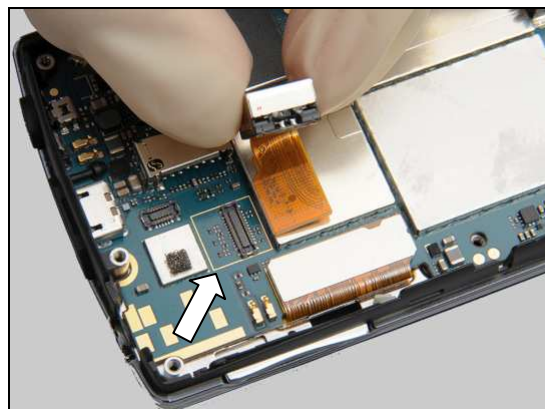
5.4 Main Camera

Wear Finger Cots when in action!

Place the Main Camera in alignment with the guiding rectangular line.

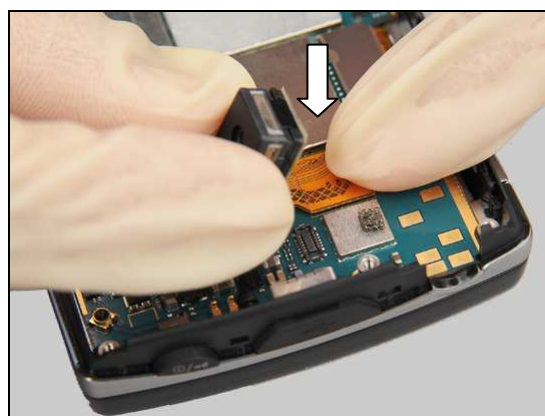
Do not touch the surface of the camera lens!

Hold the head of camera only!



Snap the BtB connector using fingers.

Do not touch the surface of the camera lens!

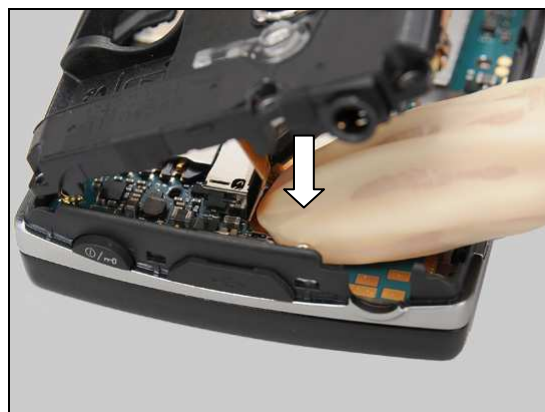


5.5 Lower Rear Cover Assy

Align the two BtB connectors as shown.

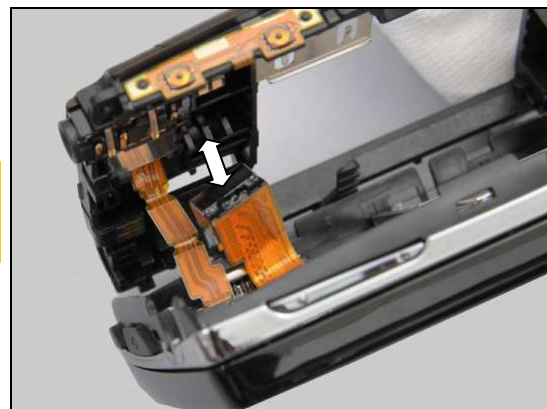
Wear Finger Cots when in action!

Snap the BtB connector using fingers.



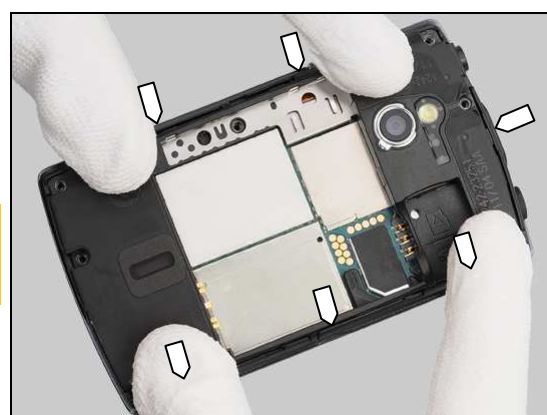
Reassembly

Check that the Main Camera will be mounted into its cavity and that the Flash LED FPC is in its normal bending status before assembly!



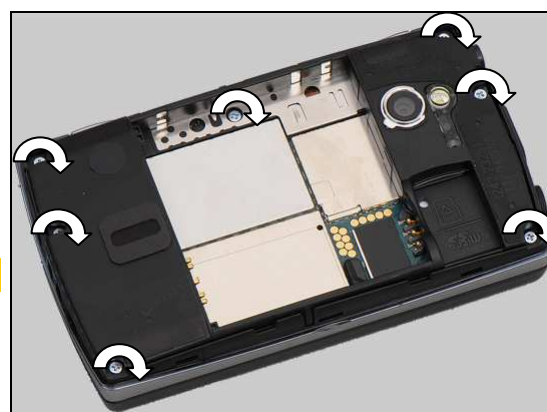
Mount the Lower Rear Cover Assy and press it to snap the hooks as shown.

Reassemble the Lower Rear Cover Assy in case of malfunction of the Volume Key and Camera Key before next actions!



Apply 12 Ncm torque when tightening the seven Screws Torx Len:3.1 Diam:1.4 with Bits (JCIS No 0).

Take new screws!



5.6 Core Unit Label

Check that the label format is properly loaded in the Zebra printer and write a new Label using the 'Label Make' software.

Only one label is allowed!



Reassembly

Attach the new Core Unit Label in proper place as shown using a Flex Film Assy Tool.



Press the Core Unit Label to secure its attachment.



5.7 Battery & Battery Cover

Insert the Battery into its cavity.

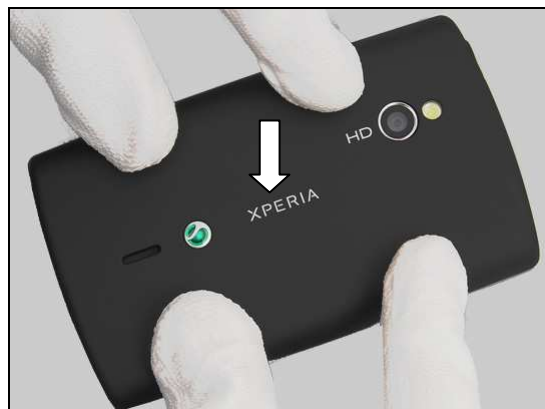


Press to snap it.



Reassembly

Place the Battery Cover onto its proper position as shown and press to snap the hooks.



Press this side to secure the three hooks snapped.



Press the opposite side to secure the two hooks snapped.



Press the bottom side to secure the two hooks snapped.





6 Country of Origin Barcodes for Brazil/VIVO Labels

Below is a link to a list of countries of origin. If you are printing a Brazil or VIVO label, scan the barcode corresponding to the correct country of origin for the “Fabricado” field.





Revision History

Rev.	Date	Changes / Comments
1	2011-Jul-15	Initial release
2	2011-Sept-12	Add of Board Swap